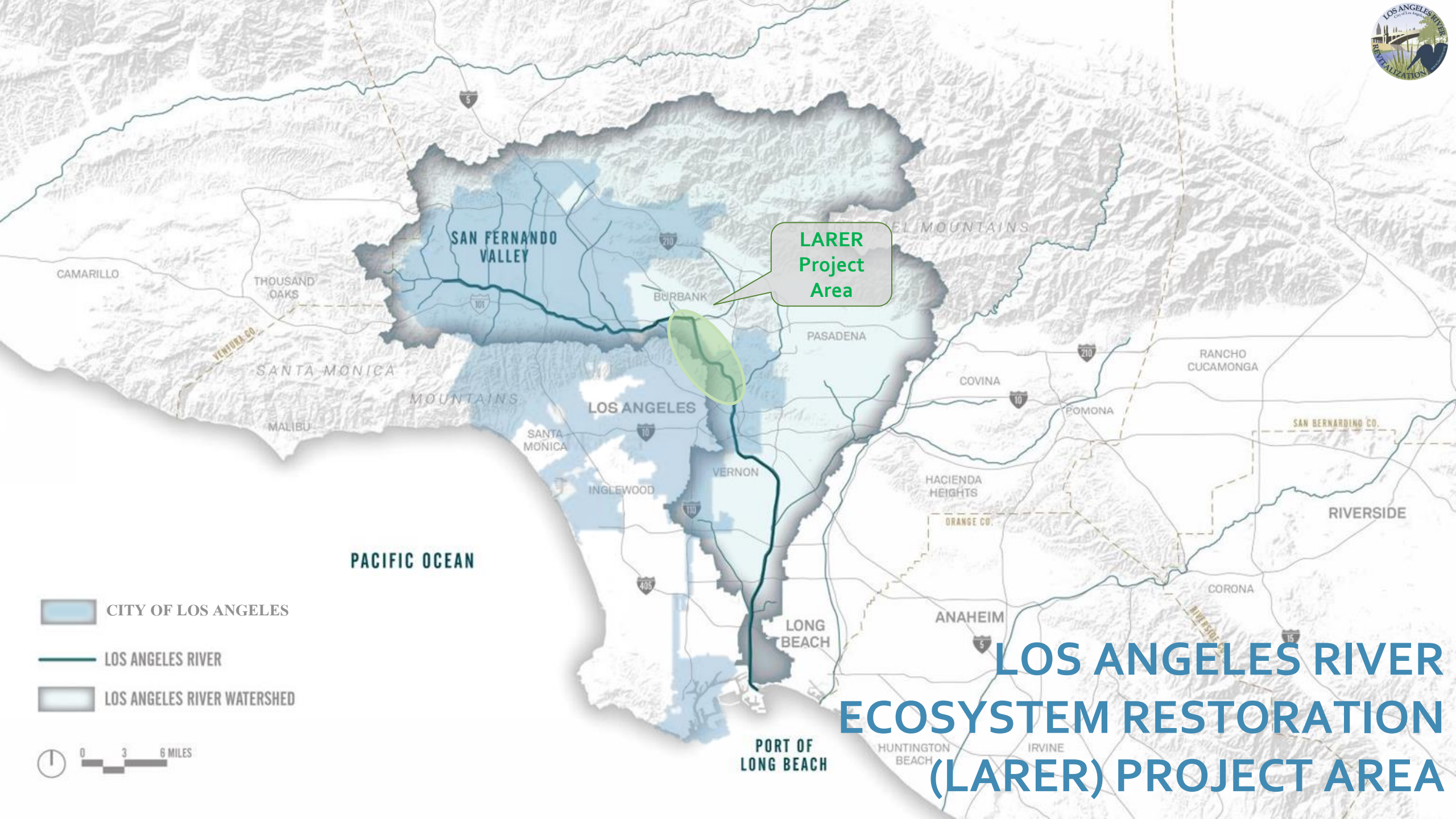


A wide-angle photograph of a river restoration project site. The river flows through a channel with concrete-lined banks. In the center, there is a lush green island of trees and vegetation. The background shows a city skyline and a large electrical transmission tower. The sky is clear and blue.




LOS ANGELES RIVER ECOSYSTEM RESTORATION PROJECT (LARER)

Acquisition Efforts

ULART October 2023



**LARER
Project
Area**

-  CITY OF LOS ANGELES
-  LOS ANGELES RIVER
-  LOS ANGELES RIVER WATERSHED



LOS ANGELES RIVER ECOSYSTEM RESTORATION (LARER) PROJECT AREA

PROJECT BENEFITS

Addresses the Climate Crisis

Adds thousands of trees and shrubs to add shade and **reduce extreme heat**



Increases **carbon sequestration** with new riparian plantings

Reduces greenhouse gases from car trips

8 miles of connected trails, bridges and underpasses

PROJECT BENEFITS

Addresses the Biodiversity Crisis

Achieves biodiversity goals for the City by creating **719 acres of habitat**

Improves regional habitat connectivity by 5 times which increases survivability and health of populations.

Improves **stream health and water quality**

Supports **Endangered and Threatened Species**



ECOLOGICAL IMPORTANCE

Mediterranean Climates



HABITAT SCARCITY

The Project area is within a globally scarce Mediterranean ecosystem, which **covers only 2% of the Earth's land surface but accounts for 20% of all known plant species.**

Biodiversity Hotspots



BIODIVERSITY

The California Floristic Province is **one of the top 25 global hotspots of rapid biodiversity loss.**



California Least Tern

STATUS & TRENDS

Over 90% of Southern California's riparian habitat has been lost along with 95% of California's wetlands and 40% of its reptiles and amphibians.

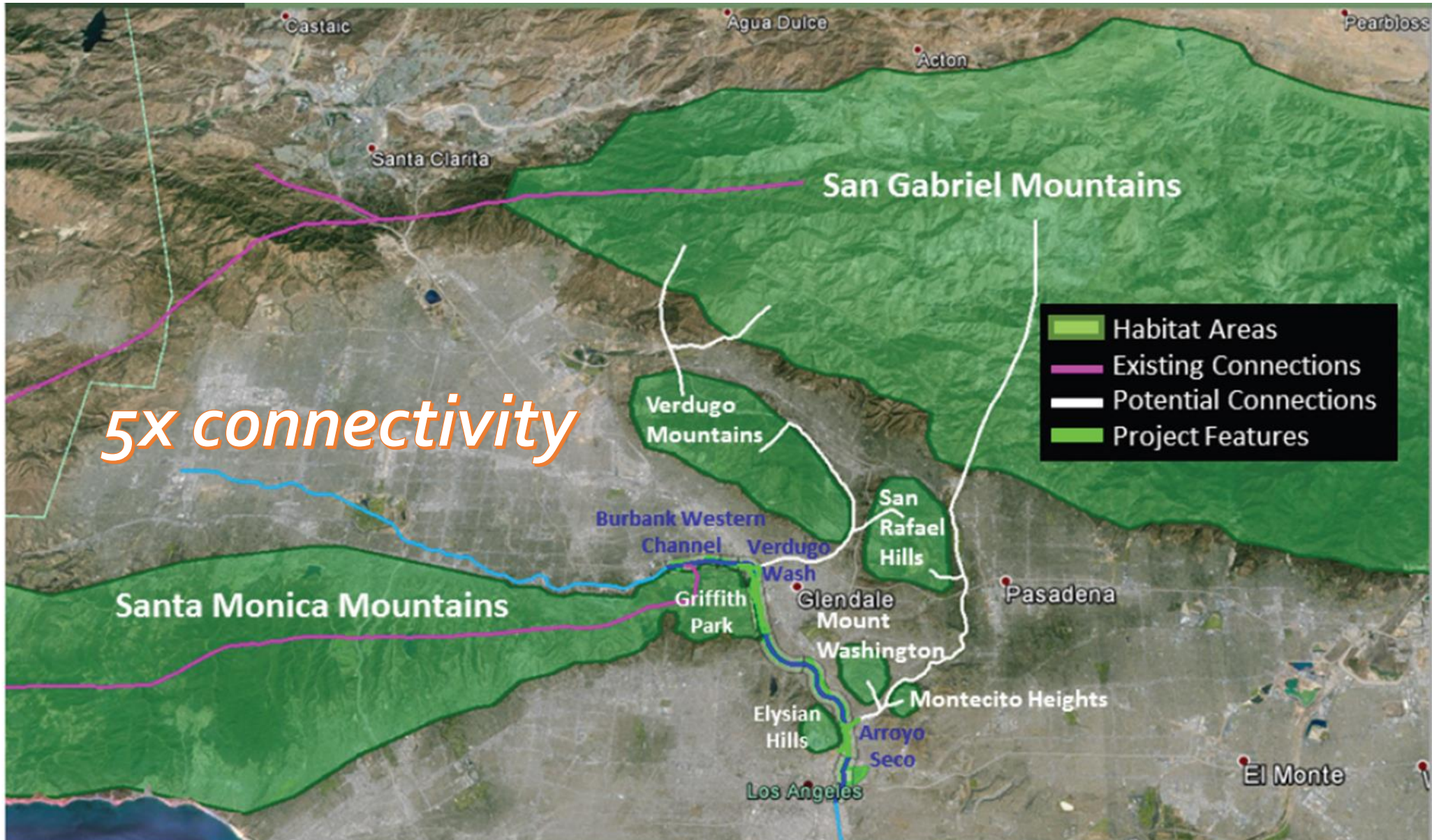


California Red-Legged Frog

SPECIAL STATUS SPECIES

Approximately **140** federally protected bird species are supported by the LA River.

ECOLOGICAL CONNECTIONS



PROJECT BENEFITS

Addresses Equity for Parks and Access to Nature:

Increases **access to open space** and nature in traditional **underserved communities**

Benefits community **physical and mental health**

Creates new naturalized areas along a central corridor of the City

*Equivalent to adding 22 LA State Historic Parks or
143 Pershing Squares worth of restoration

Taylor Yard **Equity Strategy** to address community strength



PROJECT BENEFITS

Addresses Community Social and Economic Health:

Improves **Community Health:**

Mental and physical health

Air Quality

Livability

Community connectiveness

Cultural opportunity



Economic Benefits:

~\$5 Billion in economic benefits (direct and indirect, 2013 dollars)

PROJECT BENEFITS AND GOALS

Significantly Increase Nationally - Critical Riparian Habitat

- Restoration of rare southwestern riparian and aquatic habitats
- Potential to support two (2) federally threatened and endangered species
- Significant benefits to local and migratory species

Increase Connectivity

- Restoration of natural hydrologic connectivity
- Restoration of floodplain connections
- Restoration of habitat nodes and movement corridors
- Opportunities for regional habitat connections
- Increased connection to the Pacific Flyway¹³

Increase Recreation

- Increased public education and awareness
- Increased linkage with regional recreational trails
- Improved overall recreation experience compatible with restored environment

MAJOR RESTORATION FEATURES



LA River Ecosystem Restoration Project Alternative Split Delivery USACE Design and Construction (Reach 1-4 & 7)



Reach 1 Pollywog Park



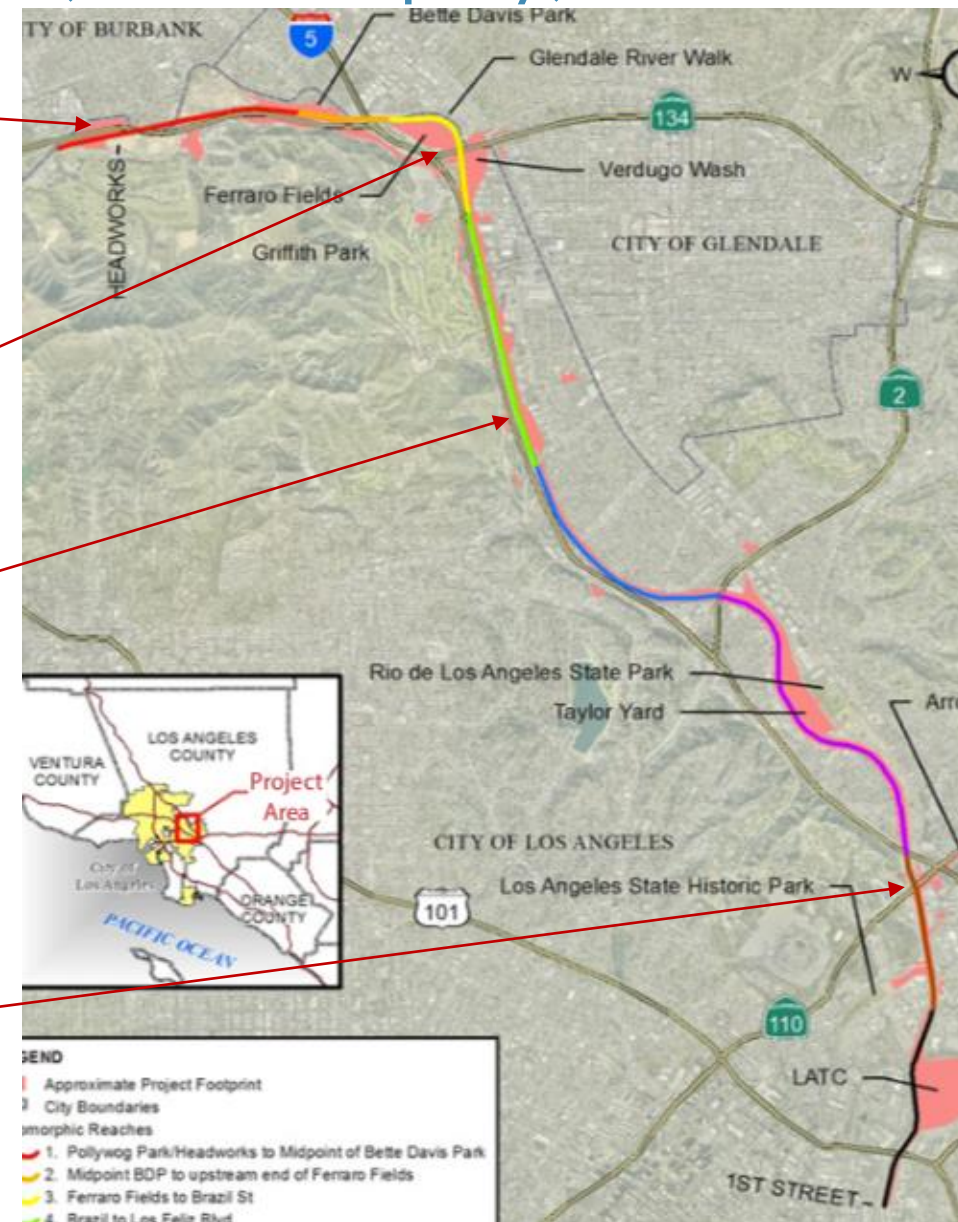
Reach 3 Verdugo Wash



Reach 4 Los Feliz Golf Course



Reach 7 Arroyo Seco



LA River Ecosystem Restoration Project Alternative Split Delivery City Design and Construction (Reach 5-6 & 8A)

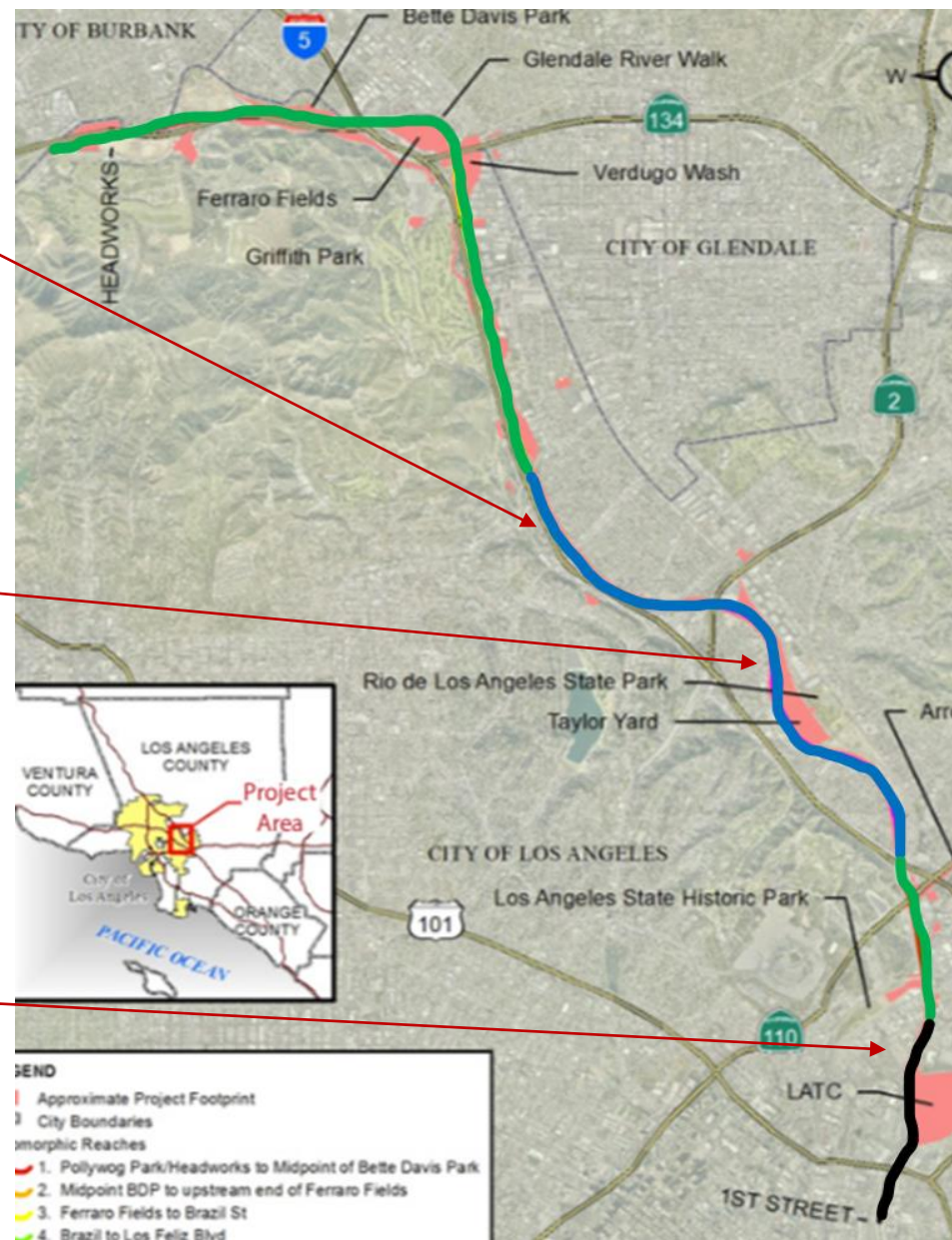
Reach 5 Channel Terracing



Reach 6 Taylor Yard



Reach 8A In-Stream



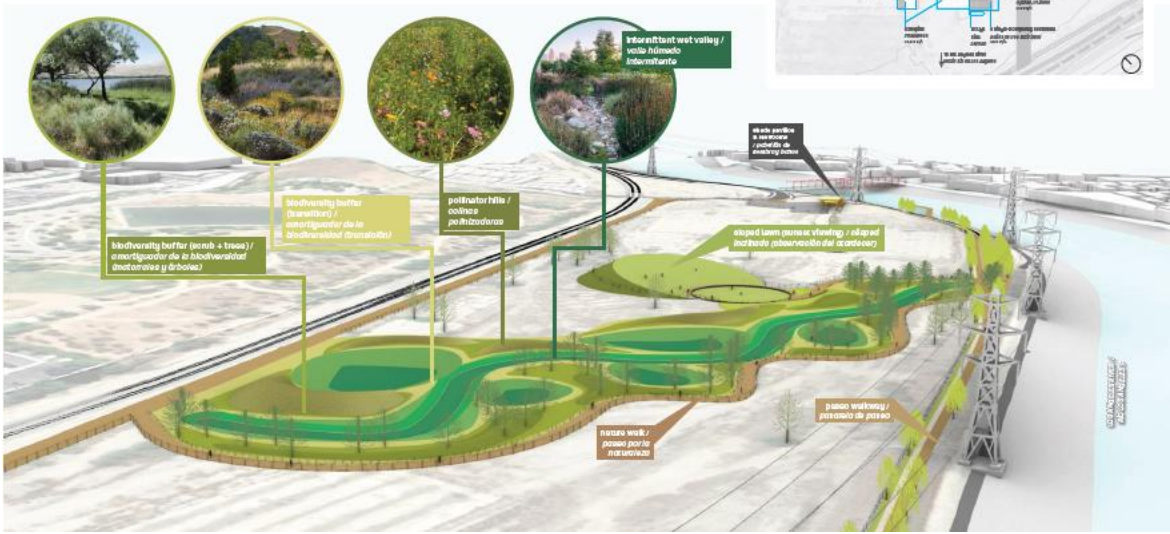
- LEGEND
- Approximate Project Footprint
 - City Boundaries
 - Morphologic Reaches
 - 1. Pollywog Park/Headworks to Midpoint of Bette Davis Park
 - 2. Midpoint BDP to upstream end of Ferraro Fields
 - 3. Ferraro Fields to Brazil St
 - 4. Brazil to Los Feliz Blvd

CONCEPTUAL ACTION SEQUENCE: ARC 1

2023

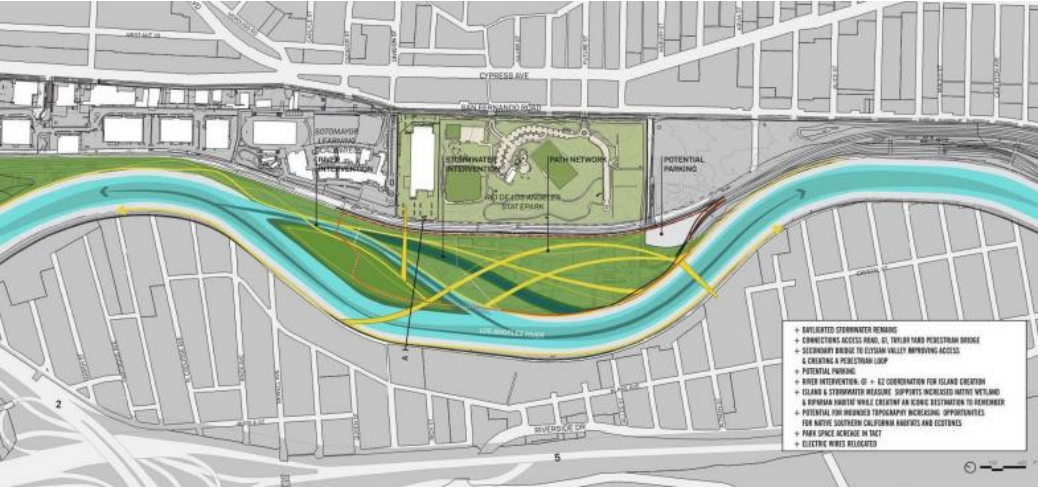


REACH 1: POLLYWOG PARK AREA RESTORATION



REACH 6: TAYLOR YARD PASEO DEL RIO PROJECT

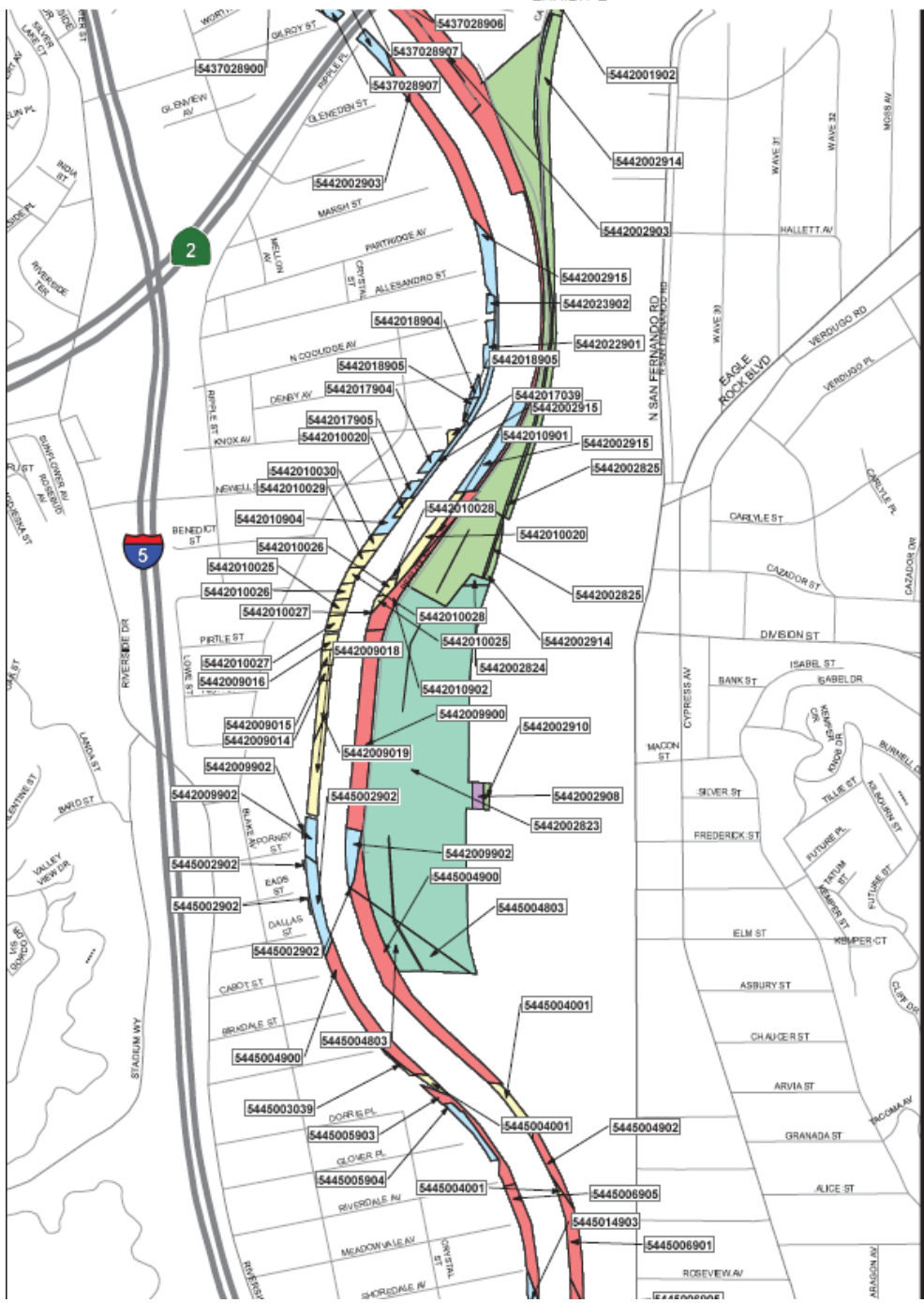
2027



REACH 6: TAYLOR YARD RESTORATION

2031

LA Zoo Project



Legend

- Abion Dairy
- Beta Davis Park
- DWP Yard
- Fensho Fields
- Griffith Park Golf Course
- LA Equestrian Center
- North Abstar Park
- Sanitation Yard
- Zoo Parking Lot

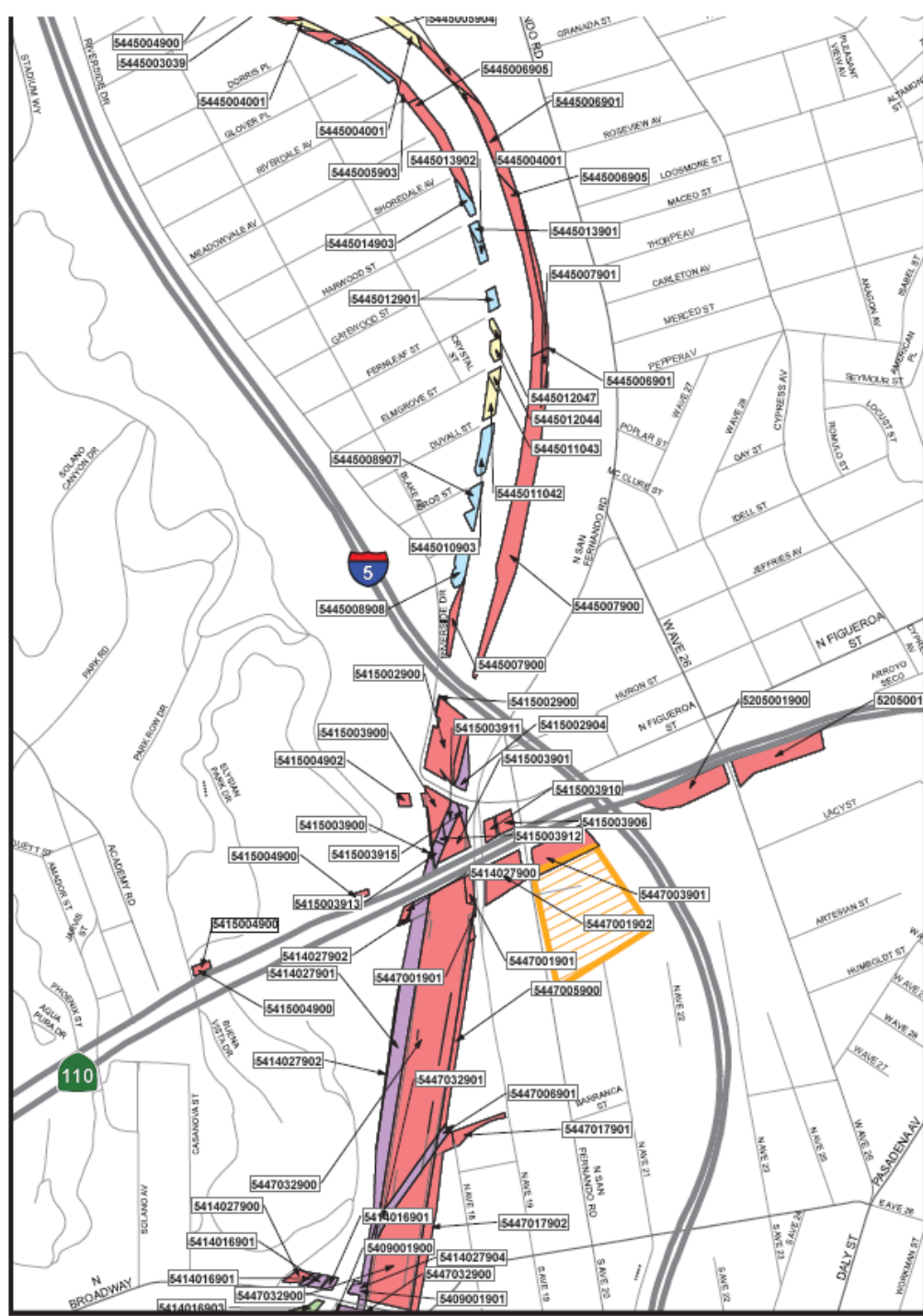
Parcel Ownership

- Private
- Glendale City
- LA City
- LA Co Flood Control District
- Metro
- Railroad
- State of California

LA City Boundary

-





Legend

- Abion Dairy
- Beta Davis Park
- DWP Yard
- Ferrero Fields
- Griffith Park Golf Course
- LA Equestrian Center
- North Abbot Park
- Sanitation Yard
- Zoo Parking Lot

Parcel Ownership

- Private
- Glendale City
- LA City
- LA Co Flood Control District
- Metro
- Railroad
- State of California

LA City Boundary

- LA City Boundary



Questions