



SEPULVEDA BASIN VISION PLAN

The ambitions are clear. Rethink the Basin with natural systems thinking and traditional ecological knowledge. Naturalize the River and tributaries to improve ecosystem function, biodiversity and floodplain connectivity. Capture, infiltrate and store precious stormwater. Connect the Basin to the surrounding communities. Create clear internal non-vehicular circulation. Enhance recreational and cultural programming. Reimagine the 2,000 acres as a rich, nature-based 'Central Park' for the San Fernando Valley.

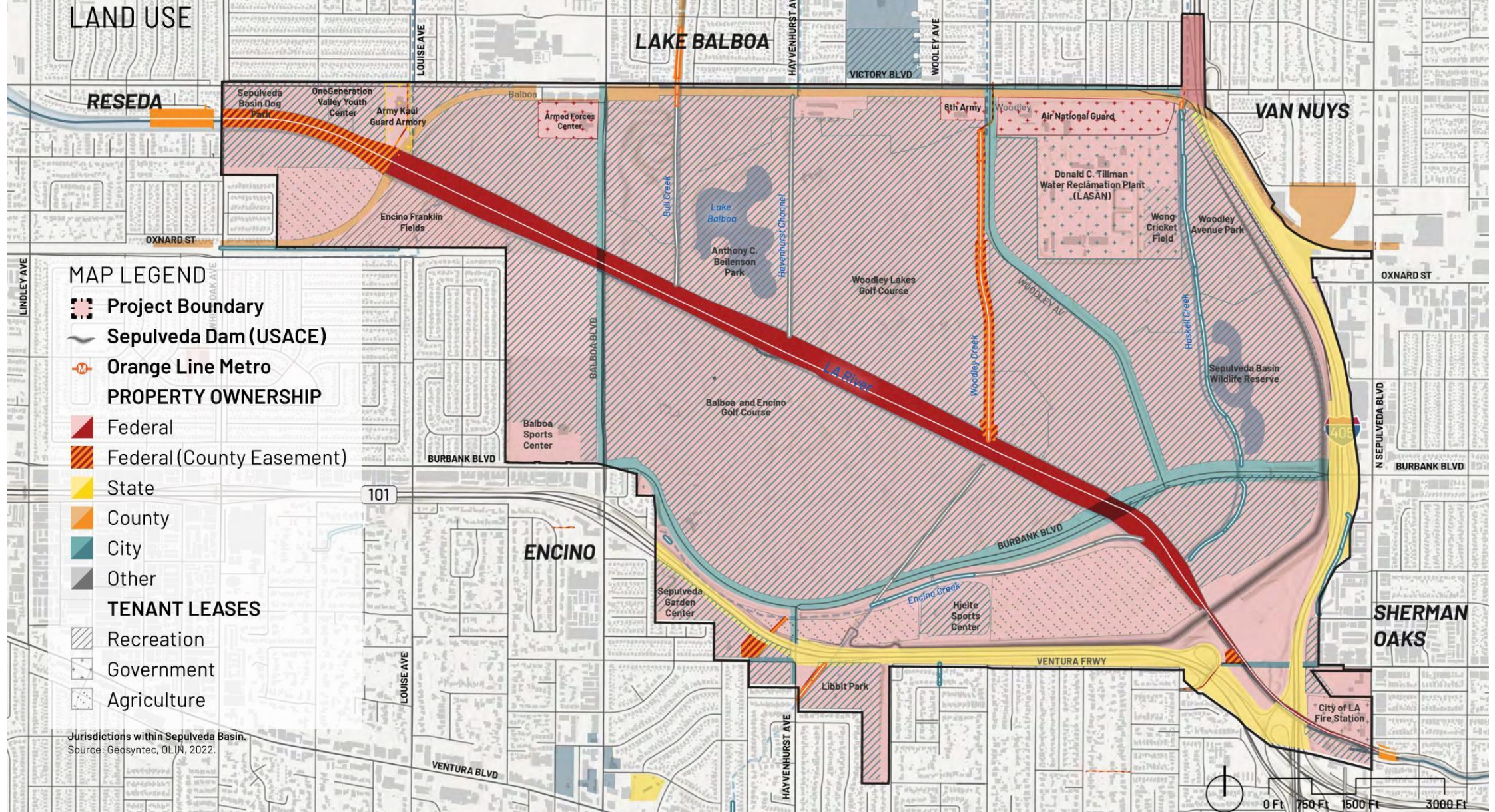
We acknowledge that the Sepulveda Basin and surrounding neighborhoods are the traditional lands of the Fernandeño Tataviam, Gabrieleño Tongva/Kizh, and Ventureño Chumash. We recognize that Indigenous Peoples have stewarded this land for thousands of years, many of whom still call it home today. We recognize our responsibility to include these Tribal Nations in what we do for Sepulveda Basin.



Geosyntec[®] OLIN

AGENCY ARTIFACT, ALTA, ESTOLANO ADVISORS, GRUEN ASSOCIATES, LELAND SAYLOR,
PACOIMA BEAUTIFUL, PSOMAS, THE ROBERT GROUP

JURISDICTIONS WITHIN THE BASIN



SEPULVEDA BASIN VISION PLAN

VISION PLAN SCHEDULE



COMMUNITY ENGAGEMENT

COORDINATION AND COLLABORATION



**DESIGN
WORKSHOPS**



**COMMUNITY
MEETINGS**



WALK SHOPS



YOUTH OUTREACH



**80
INTERESTED
PARTNERS**

and counting...



**AGENCY
COORDINATION**

2,400+ RESPONDED SURVEYS

- 80 Interested Partner Meetings
- 6 Design Workshops
- 3 School Sessions
- 4 Community Meetins
- 24 Community Pop-ups
- 2 Community Surveys
- 15 Walkshops
- 3 TAC Meetings
- 4 Neighborhood Meetings

VISION PLAN OBJECTIVES

1

Increase climate resilience of the basin and surrounding neighborhoods.

4

Improve the interface between ecology, recreation, cultural, and art areas.

7

Enhance recreational, educational, cultural, and art programming.

2

Increase ecosystem function within the Basin using nature-based strategies.

5

Improve water quality of streams and outlets entering the basin.

8

Maintain or increase flood risk reduction.

3

Create natural functioning of the LA River and Tributaries.

6

Improve multi-modal transportation access to the basin and within the basin.

9

Explore governance and long-term operations and maintenance models for the basin.

VISION PLAN



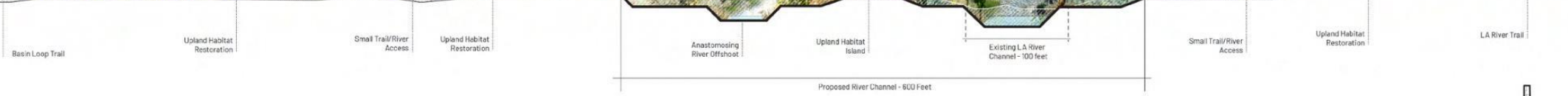
- 1 Aquatic Center (Phase 1)
- 2 Wildlife Reserve Enhancements
- 3 Basin Trash Removal, Brush and Slash Clearing, and General Cleaning
- 4 Seasonal Kayak Launch Areas
- 5 Basin-wide Facilities Updates
- 6 Hjelte Soccer Fields
- 7 White Oak Baseball Fields Upgrades and Enhancements
- 8 Balboa Sports Center Improvements
- 9 Wayfinding Upgrades
- 10 Shuttle System / Microtransit
- 11 Nature Playground
- 12 Victory Boulevard Mobility Gateways
- 13 Hayvenhurst South Side Mobility Gateway
- 14 Festival Plaza and Recreational Fields
- 15 New Cricket Fields
- 16 Restaurant, Education Center, and Gardens
- 17 Resilience and Community Center
- 18 The Grand Allee Civic Promenade
- 19 Green Streets and Bikeways
- 20 Balboa Lake Upgrades and Enhancements
- 21 Balboa and Encino Golf Course Improvements
- 22 Bull Creek Project
- 23 Hayvenhurst Channel Project
- 24 Encino Creek Project
- 25 Woodley Creek Project
- 26 Haskell Creek Project
- 27 River De-Channelization and Trail
- 28 1st Nations Ceremonial and Harvest

- 31 Natatorium and Community Sports Center
- 32 Recreation and Parks Operations Facilities Improvements
- 33 Encino Community Garden and Park Improvements
- 34 Water Quality and Infiltration Habitat
- 35 Pickleball & Basketball Courts
- 36 Equestrian Facilities
- 37 Encino Waterfront
- 38 Back 40 Habitat and Infiltration
- 39 LA River Trail 405 Crossover Bridge
- 40 Oxnard Connector
- 41 Libbit Park Connector
- 42 Improved Underpass at Hayvenhurst South
- 43 405/Burbank Transportation Improvements and Overlook



SHERMAN OAKS

SEPULVEDA BASIN VISION PLAN A NATURALIZED RIVER



Source: OLIN, 2023.

SEPULVEDA BASIN VISION PLAN

CIVIC PROMENADE

VICTORY BOULEVARD



SEPULVEDA BASIN VISION PLAN

WE WANT TO HEAR FROM YOU ABOUT THE DRAFT VISION PLAN!

THE FULL DRAFT PLAN WILL BE DOWNLOADABLE AND COMMENT FORM WILL BE AVAILABLE ON OCTOBER 18TH

**BIT.LY/
SEPULVEDABASINVP**



Email - eng.sbvplacity.org

Instagram - [instagram.com/LaBureauEngineering/](https://www.instagram.com/LaBureauEngineering/)

Facebook - [facebook.com/LaBureauEngineering/](https://www.facebook.com/LaBureauEngineering/)



SEPULVEDA BASIN VISION PLAN

Draft Sepulveda Basin Vision Plan Community Comment Form

Thank you for taking the time to review the Draft Sepulveda Basin Vision Plan. The Bureau of Engineering is the City's lead on the Vision Plan process, and we would appreciate your feedback on the Draft Vision Plan document.

You can download the draft plan at the following link: