

SENNETT CREEK FEASIBILITY STUDY GREENWAY PLANNING & DESIGN

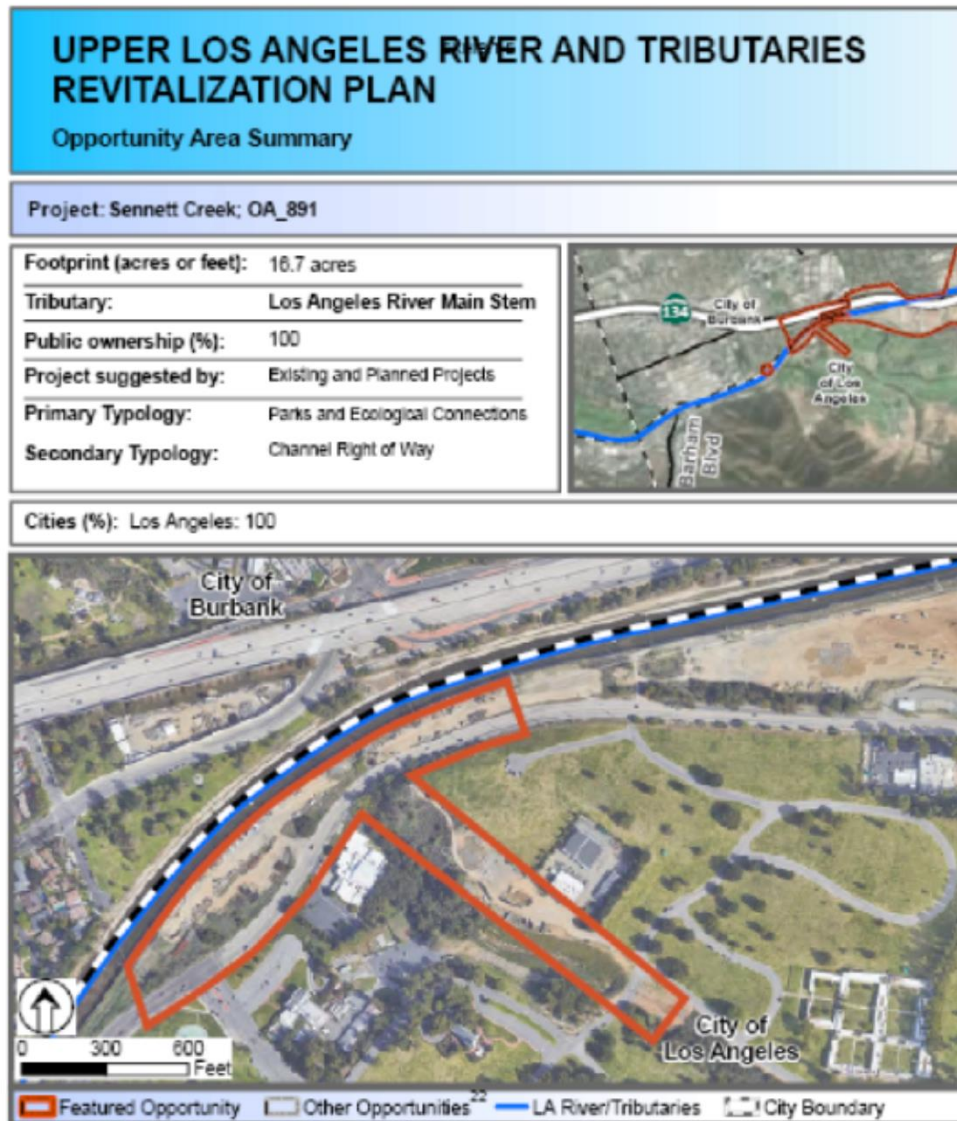


ULART Working Group October 17, 2023



North East Trees
Bringing Nature Back

SENNETT CREEK OPPORTUNITY AREA



PLANNING & VISIONING

CONSULTANTS

LYNNE DWYER

LANDSCAPE ARCHITECT &

VIK BAPNA

CALIFORNIA WATERSHED

ENGINEERING

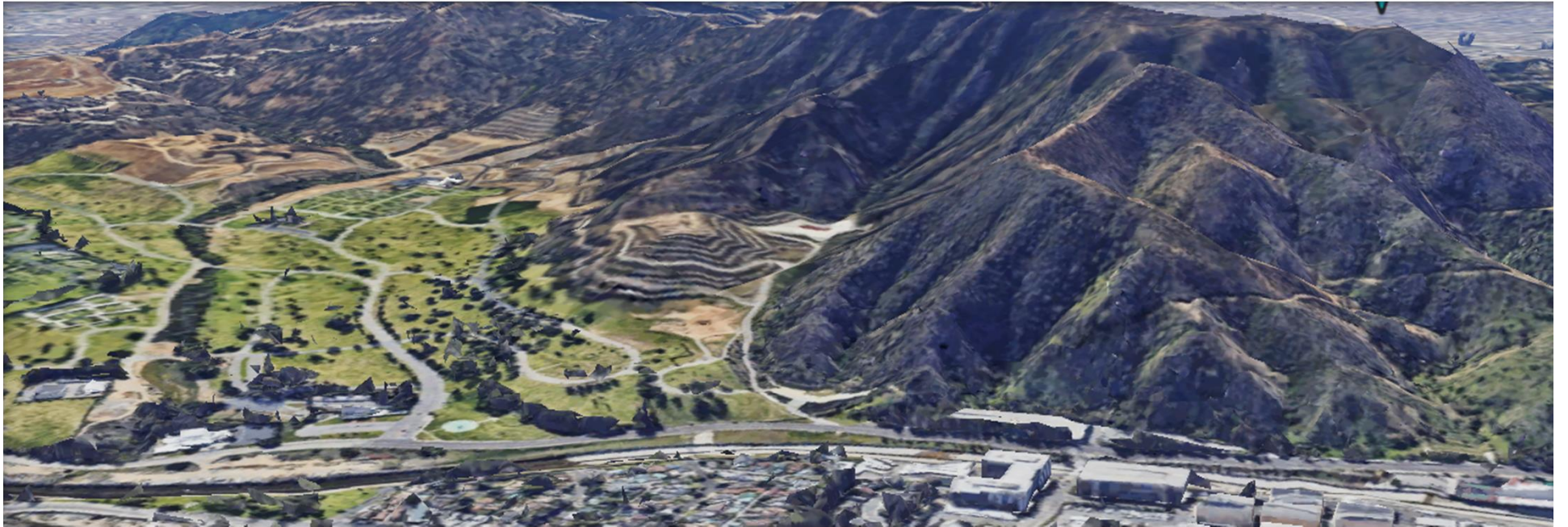
- Site Analysis
- Technical Studies
- Community Outreach & Engagement
- Three Conceptual Design Alternatives
- Preferred Alternative Concept Plan

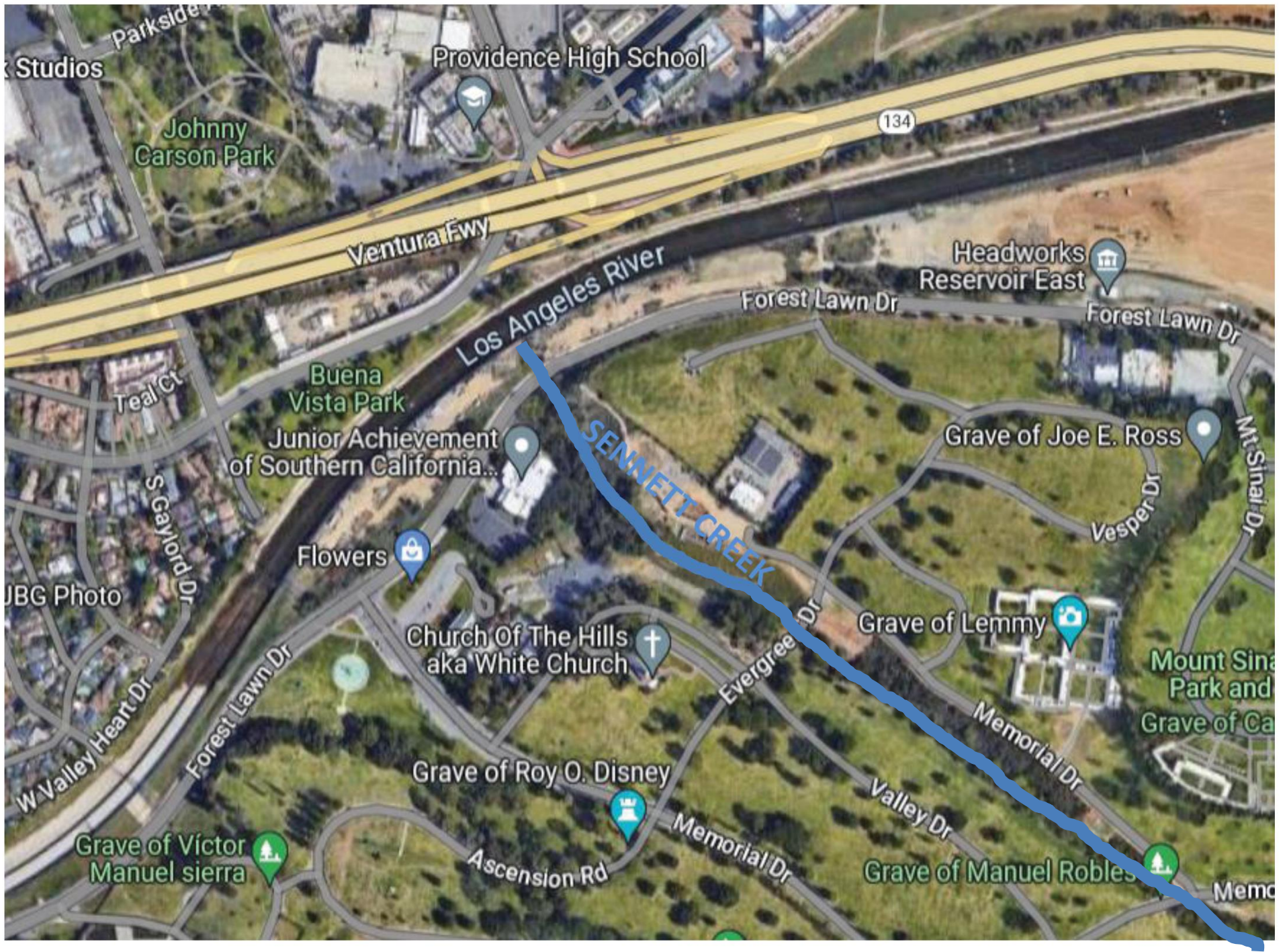
SCHEDULE

SENNETT CREEK PLANNING & FEASIBILITY STUDY		LYNNE DWYER LANDSCAPE ARCHITECT														
5/10/2023		Deliverables & Invoices submitted 1st Day of Month	2023									2024				
			May	June	July	August	Sept	Oct	Nov	Dec	Jan	Feb	March	April	May	
Task 1	Program Management															
	Program Manager	12 Months														
Task 2	Conceptual and Preliminary Design															
	Site Analyses	June 1 2023														
	Conceptual Design Alternatives	July 1 2023														
Task 3	Feasibility Studies															
	Design	August 1 2023														
	Engineer - Hydrology	October 1 2023														
	Engineer - Mapping & Survey	October 1 2023														
	Access Mobility Bicycle Study	November 1 2023														
	Habitat Restoration	December 1 2023														
	Reports and Exhibits	January 1 2024														
Task 4	Design Development															
	Basis of Design Report	February 1 2024														
	Preferred Alternative Concept Plan	March 1 2024														
	Reports and Exhibits	May 1 2024														
Task 5	Community Outreach and Education															
	Outreach Program & Meetings	12 Months														
	Proposal Timeline															
	Updated Timeline															

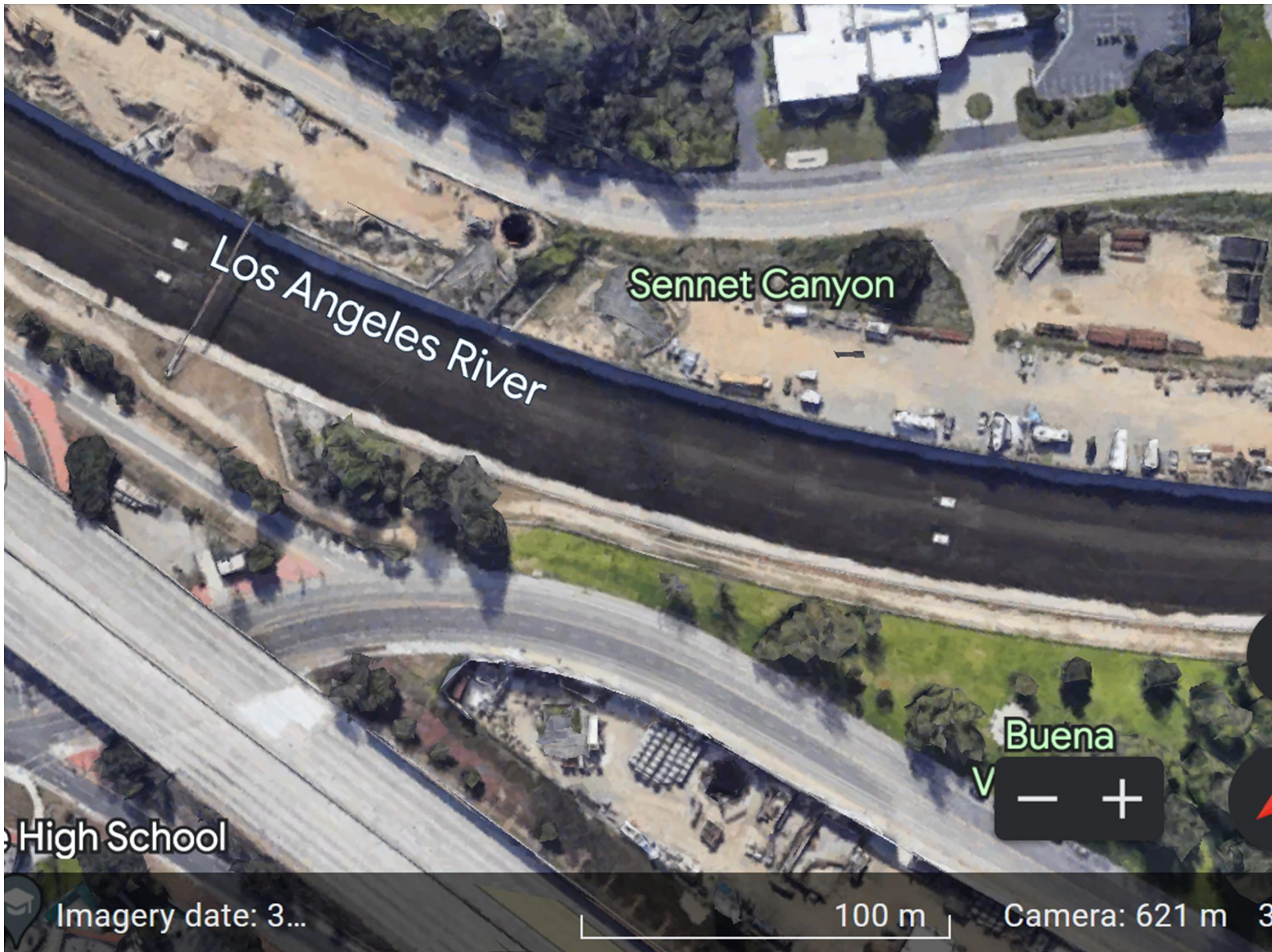
Griffith Park











Los Angeles River

Sennet Canyon

Buena

High School

Imagery date: 3...

100 m

Camera: 621 m 3

OUTREACH & ENGAGEMENT

- One-on-One interviews with key stakeholders
 - LADWP, CD4, Forest Lawn, LA Rec & Parks, SMMC
- Presentations
 - 2023 State of the Los Angeles River Watershed Conference Poster Session
 - ULART Working Group
- Email to Stakeholders
 - Informational updates
 - Design alternatives and questionnaires
 - Link to final Concept Plan and Report

Sennettcreekinfo@gmail.com

STAKEHOLDER OUTREACH LIST

SENNETT CREEK NEIGHBORS

Forest Lawn Hollywood Hills
Burbank Rancho Association
Warner Bros. Entertainment Inc
The Walt Disney Studios Burbank

Hollywood Hills West Neighborhood Council
Junior Achievement of Southern California
AVA Toluca Hills

NONPROFIT GROUPS & COMMUNITY ORGANIZATIONS

Friends of Los Angeles River
Friends of Griffith Park
Griffith Park Advisory Board
Griffith Park Observatory Foundation
Audubon Center at Debs Park

Los Angeles Parks Foundation
Los Angeles County Bicycle Coalition
Los Angeles Walks
Mujeres de la Tierra
The River Project
Clockshop

NATIVE PEOPLES & TRIBAL GOVERNMENTS

Gabrieleno/Tongva San Gabriel Band of Mission Indians
Gabrieleno Band of Mission Indians – Kizh Nation
Gabrielino Tongva Indians of California Tribal Council
San Fernando Band of Mission Indians
Fernandeno Tataviam Band of Mission Indians
San Manuel Band of Mission Indians

ELECTED OFFICIALS

Los Angeles City Councilmember 4th District, Nithya Raman
Los Angeles County Supervisor District 5: Kathryn Barger
California State Senate District 24: Ben Allen
California State Senate District 25: Anthony J. Portantino
California State Senate District 26: Maria Elena Durazo
California State Assembly District 51: Rick Chavez Zbur
US Congress District 30: Adam Schiff

PUBLIC AGENCIES

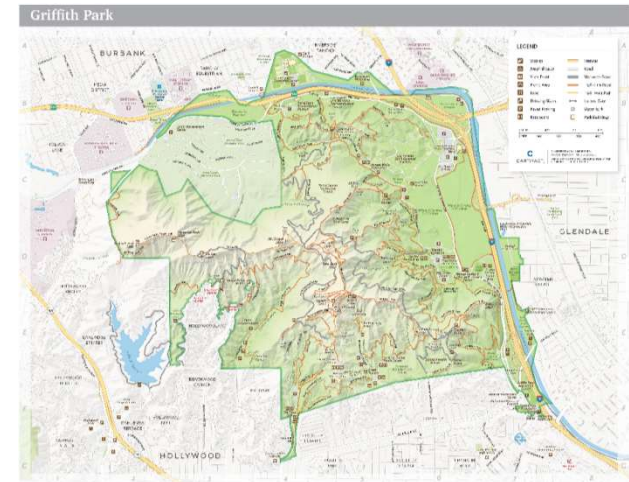
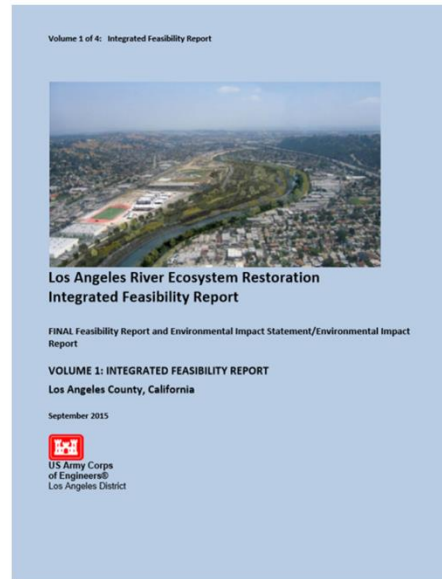
Los Angeles Department of Water & Power
US Fish & Wildlife Service
California Department of Fish & Wildlife Region 5-South Coast
County of Los Angeles Fish & Wildlife
US Army Corps of Engineers, Los Angeles District
National Park Service, Rivers & Trails
Santa Monica Mountains Conservancy/Mountains Recreation Conservation Authority
Los Angeles Department of Recreation & Parks
Los Angeles City Bureau of Engineering
City of Burbank Parks & Recreation

LA RIVER MASTER PLAN

LA RIVER MASTER PLAN

APPENDIX VOLUME I
DESIGN GUIDELINES

PLANNING CONTEXT



JUNE 2022



Historical Ecology of the Los Angeles River Watershed and Environs

Infrastructure for a Comprehensive Analysis



Philip J. Ethington,^{1,2} Beau MacDonald,¹ Gary Stein,¹ William Deverell,¹ and Travis Longcore³

¹Department of History, University of Southern California
²Spatial Sciences Institute, University of Southern California
³Institute of the Environment and Sustainability, UCLA

Report to the John Randolph Haynes and Dora Haynes Foundation

June 15, 2020

Spatial Sciences Institute
University of Southern California
Los Angeles, California 90089

PRELIMINARY DETERMINATION OF U.S. ARMY CORPS OF ENGINEERS "WATERS OF THE U.S." AND WETLANDS JURISDICTION AND IMPACT ANALYSIS

FOREST LAWN MEMORIAL-PARK, HOLLYWOOD HILLS

Located in a non-sectioned area of Township 1 north, Range 14 west, of the
Burbank, California U.S.G.S. Topographic Quadrangle

CITY OF LOS ANGELES, CALIFORNIA

Prepared for:

Forest Lawn Memorial-Park Association
1112 South Glendale Avenue
Glendale, California 91205

and for:

U.S. Army Corps of Engineers

Prepared by:

TERACOR Resource Management
27555 Truss Road, Suite 207
Temeoala, California 92591
(951) 684-0000
Fax: (951) 684-0035
Contact: Samuel Reed, Principal
email: sam@teracor.net

Surveys conducted by:
Samuel Reed, T. Seat, J. Reed, and P. Piest



02 September 2010



ISSUES

- Habitat
 - Quality
 - Quantity
 - Connectivity
- Recreation
 - Availability
 - Accessibility
 - Connectivity
 - LA River
 - Griffith Park
 - Burbank
- Water Resources
 - Quality
 - Use & Conservation
- Infrastructure
 - Power Lines & Towers
 - Underground Utilities
 - Forest Lawn Drive & 134 Freeway







