

Pacoima Wash Activations and Small Projects

+

October 2023



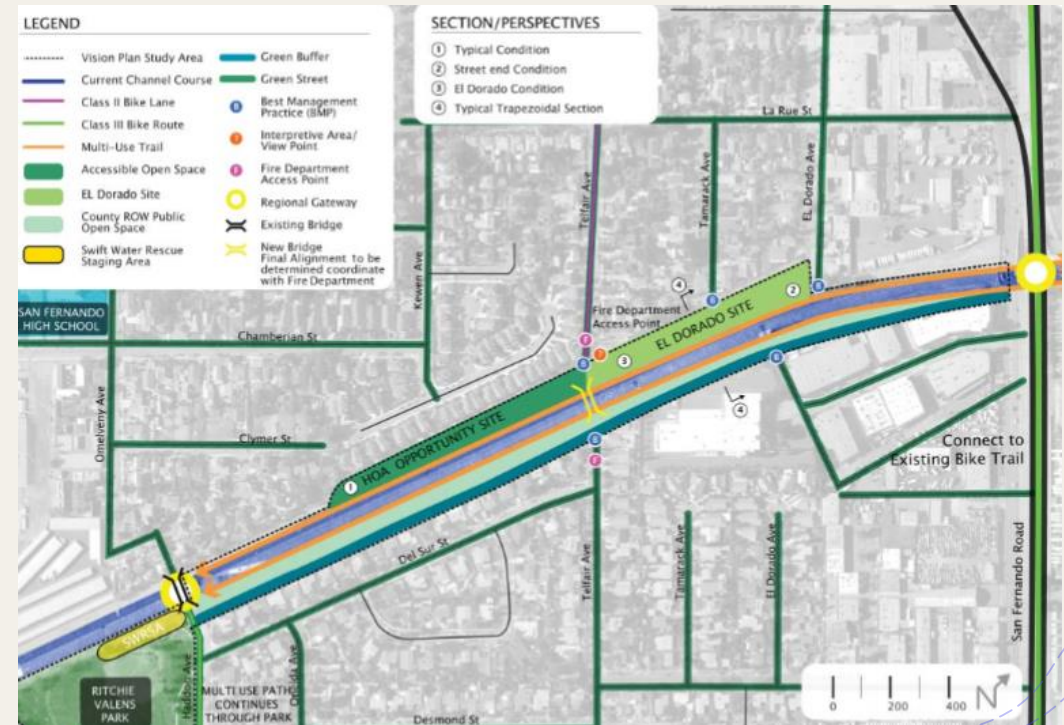
Introduction

- + The Pacoima Wash is a 33-mile-long tributary of the LA River that runs through several neighborhoods in California's San Fernando Valley. While the waterway serves the important purpose of flood control, it also contributes to a sense of disconnection among locals, making everyday activities like cycling and walking a challenge.
- + In 2009, Pacoima Beautiful gathered local residents to create The Pacoima Wash Vision Plan. This comprehensive plan aimed to transform 4 miles of the Wash in Pacoima, Sylmar, and San Fernando into a community asset that promotes healthy and sustainable living.



Project Progress: 2020 to Present

- + **2020:** PB secured funds from Prop 68 to continue carrying out the Vision Plan
- + Partnered with Kounkuey Design Initiative (KDI) to develop community-informed engineering plans
- + Conducted extensive community engagement, including door-to-door surveying, focus groups, event tabling, and design meetings to ensure the planned improvements reflect the needs of the surrounding community
- + 75% of the design is complete to date



Pacoima Neighborhood section of the Wash

Project Scope: PB x KDI

Pacoima Beautiful and KDI have collaborated to organize various community events and physical enhancements around the intersection of the Pacoima Wash and Haddon Avenue. These will create immediate benefits for the community, especially for the youth who use the Haddon Avenue pedestrian bridge to walk to and from school. We hope to sustain the momentum of awareness for the long-term development of the Pacoima Wash Greenway in this area as well as transform what was once a neglected area into a welcoming and safe entry point for the future Greenway.

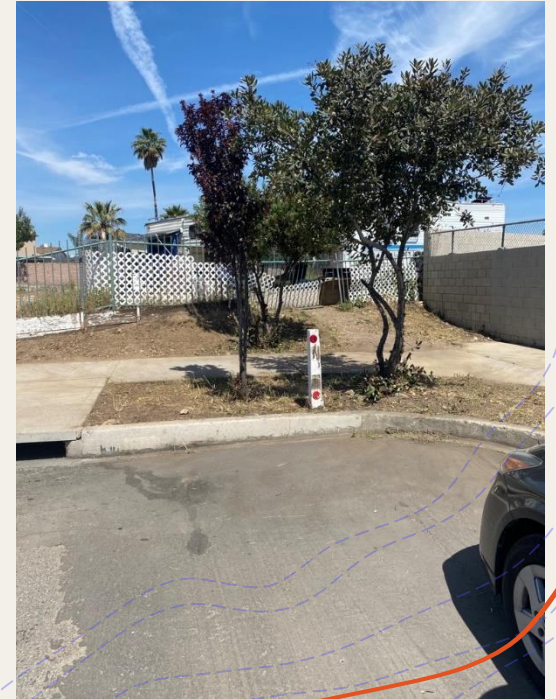
Activations: The team will host a series of events at the project site that will support its maintenance as well as engage the surrounding community to bring awareness and create a sense of place.

Small Projects: The team will design and construct small-scale improvements to the city's right of way to create a permanent, beautiful, safe gateway to the Wash.



Activations: Earth Day Cleanup

- + 120 Participants
- + Focus was on cleaning up and beautifying the Haddon Ave. bridge





Activations:

Educational Tour – Spaces + Places with CSUN

- + PB's planning team conducted this presentation and site visit with CSUN Honors students
- + Students learned about the Pacoima Wash, our plans for the future Greenway, and the importance of community engagement in urban planning projects

Activations: Mural

- + Mural design was inspired by community feedback over two design meetings and door-to-door surveying in the Spring and early Summer months of 2023.
- + Mural Artist: Kristy Sandoval, local artist and Creative Director staffed at PB.
- + The Tataviam Land Conservancy was hired as a consultant to ensure the design was historically accurate.
- + A local contracting team was hired to remove the layers of paint over graffiti and patch up holes in walls.
- + PB staff will lead 2 – 3 community painting days in October and November

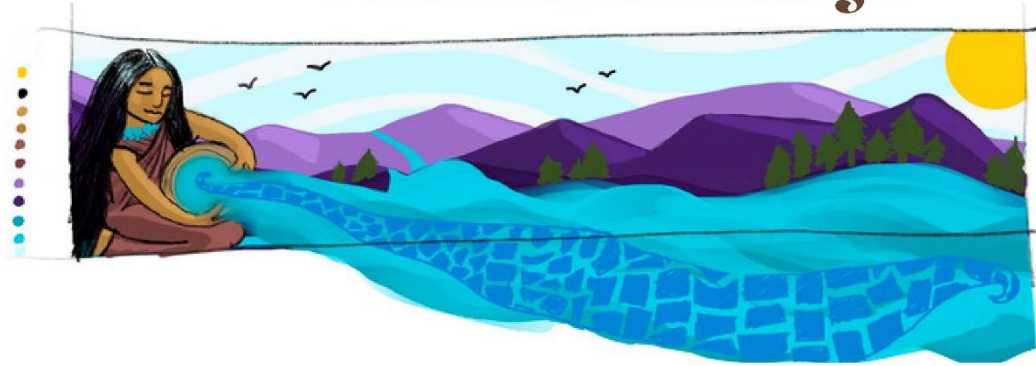


Mural Ideas

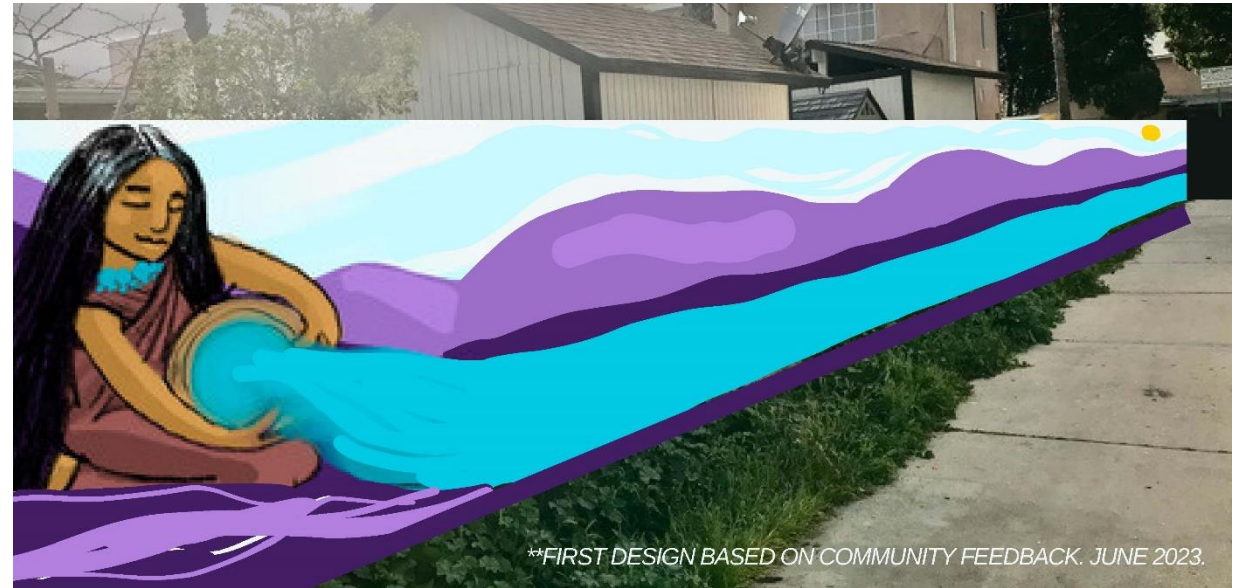
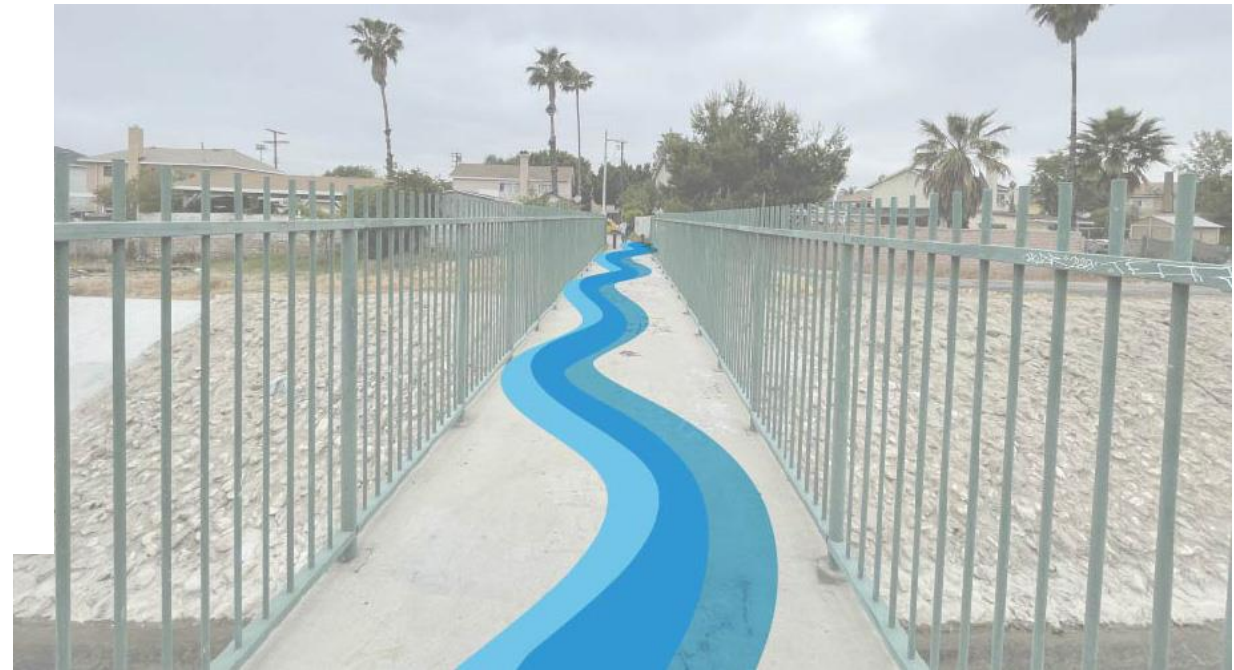
Word Cloud: the larger the size of the word, the more frequently it was mentioned in the survey response for mural themes.



Final Mural Design



Based on community feedback from the June 7th meeting, they wanted to see more nature incorporated into the design. The design will also have the water incorporated into the alley pathway with paint and a decorative feature, such as ceramic tile or pavers. There is also the potential to have the water paint feature





Planned Future Activations:

- + People's Collaborative Academy class on water resources
- + Continued youth engagement with San Fernando High School Students
- + Movie Night on the Wash
- + Second Community Clean-up

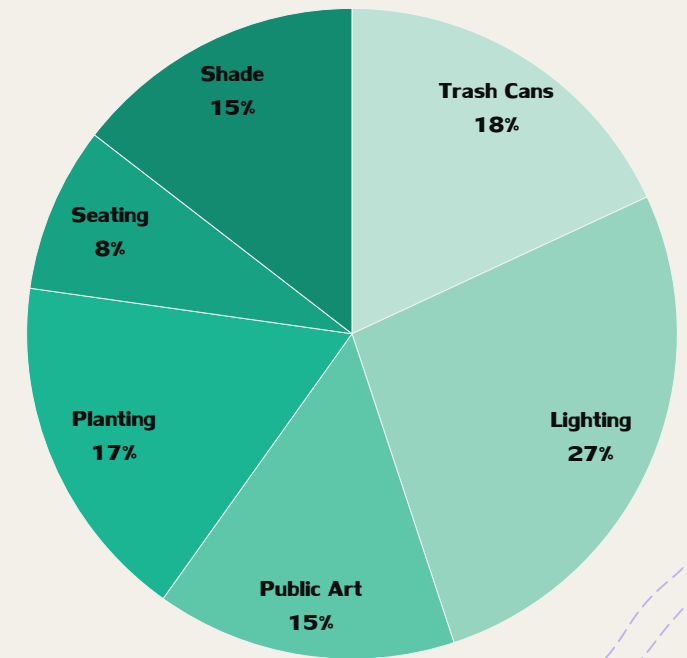
Small Projects

Community Feedback

We engaged with residents in the surrounding area to gather input on desired amenities and improvements at the site.

Amenities incorporated into design:

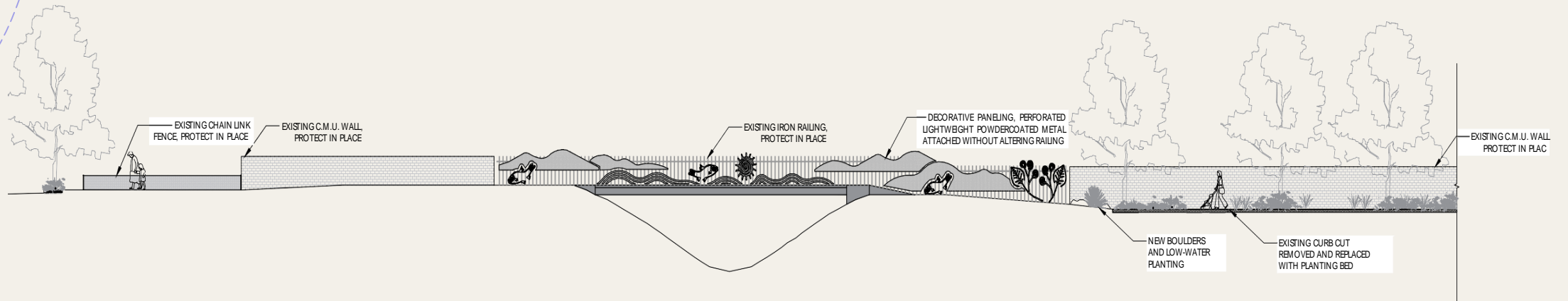
- Addition of **permeable pavers** and **lights** along path of pedestrian bridge
- Addition of a **shade tree**
- Addition of **decorative paneling** along fence railings, without altering existing railings.
- Replacing curb cuts with **planting beds**
- Introducing **low-water landscaping** to replace existing vegetation



Summary of amenities requested at bridge site throughout 93 surveys

Small Projects

Logistics and Permitting



HADDON STREET BRIDGE ELEVATION

- + **Cost Assessment:** We requested an itemized project cost estimate from the contractor to allow for careful selection and prioritization of design elements based on community need and budget allowance
- + **Permit Progress:** KDI is currently in the process of obtaining permits for all design elements.



Challenges:

- + **Staff Transitions**
- + **Budget Modification Needs**
- + **Parcel Ownership / Mobile Homes**
- + **Lighting**
- + **Timeline**



Thank you!

