



2022 Los Angeles Countywide Parks Needs Assessment Plus (PNA+): **Los Angeles County's 30x30 Plan**

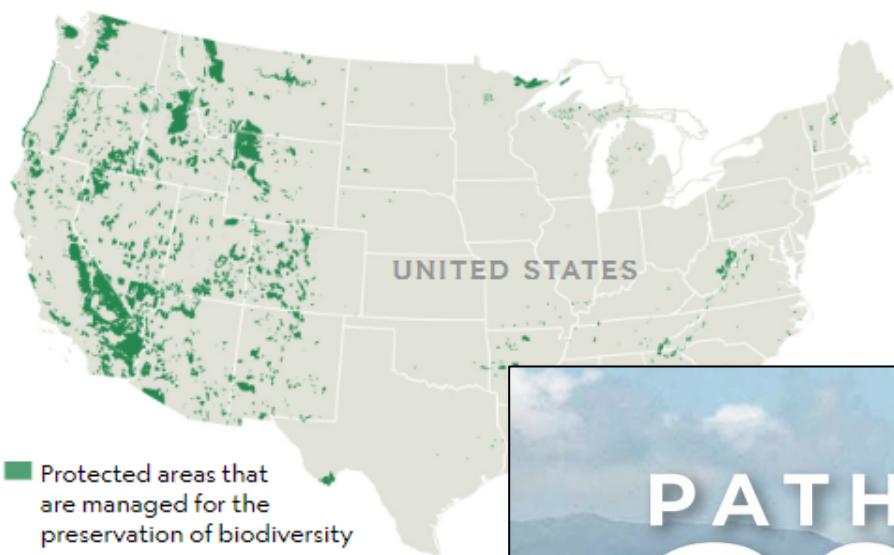
Los Angeles County Department of Parks and Recreation (DPR)

October 2023

Conserve 30% of Lands and Waters by 2030

Biden's commitment to conserve 30 percent of U.S. land by 2030 will require a huge increase in protected areas.

Only 12 percent of total U.S. area has sufficient protections to meet the 30 by 30 conservation goal.



More than 190 countries sign landmark agreement to halt the biodiversity crisis

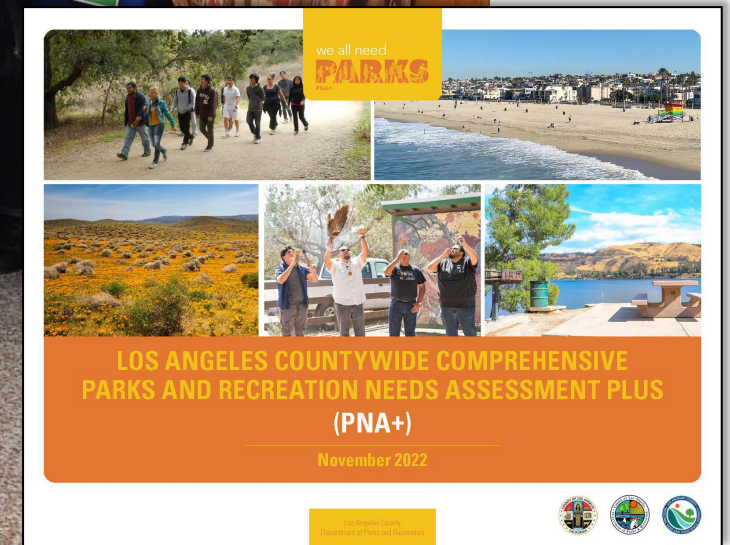
By Laura Paddison, CNN
Updated 8:39 AM EST, Mon December 19, 2022



**PATHWAYS TO
30x30
CALIFORNIA**

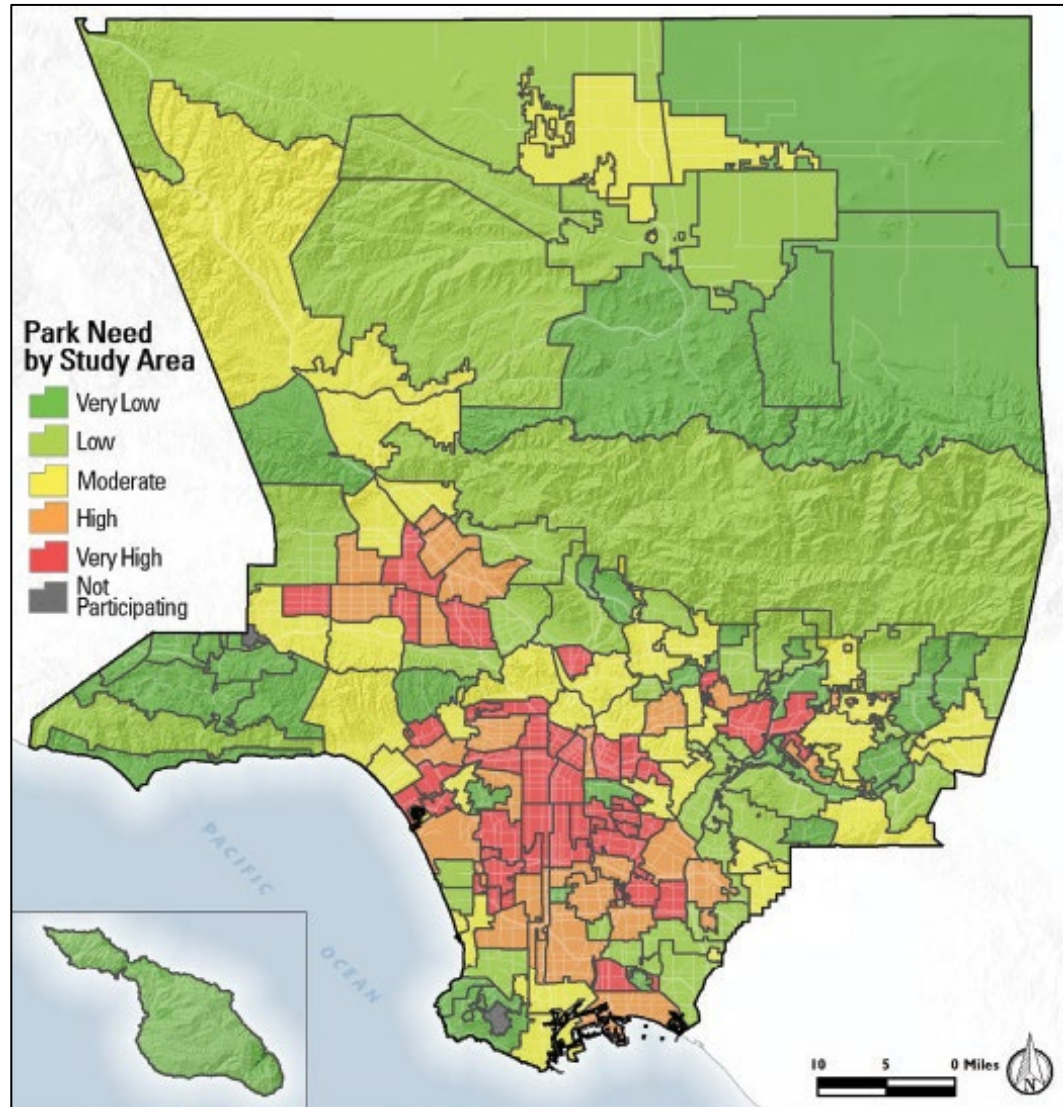
**Accelerating Conservation of
California's Nature**

Board adopted PNA+ on December 6, 2022

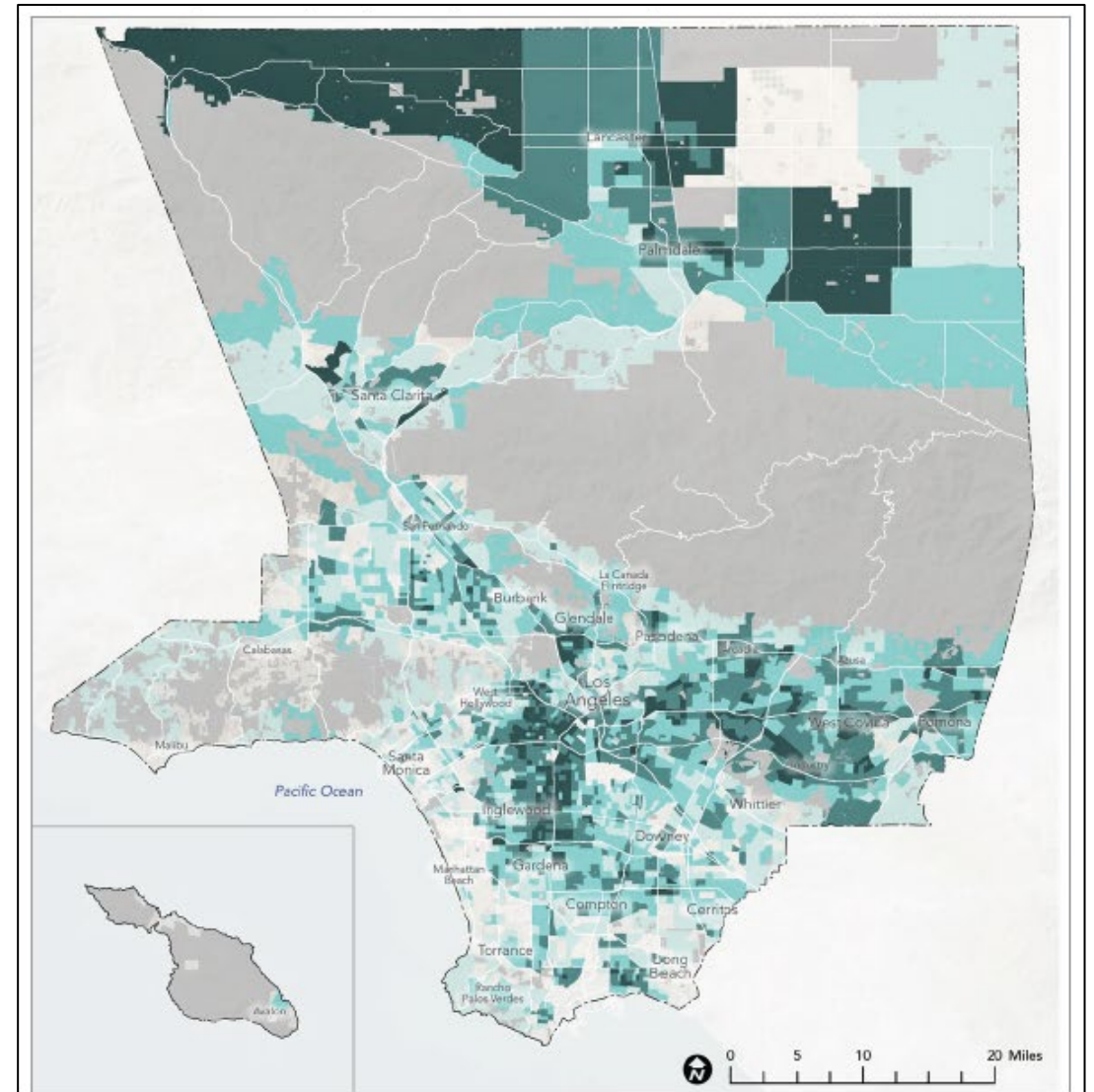


Prioritize the Most Vulnerable

2016 Park Need Level



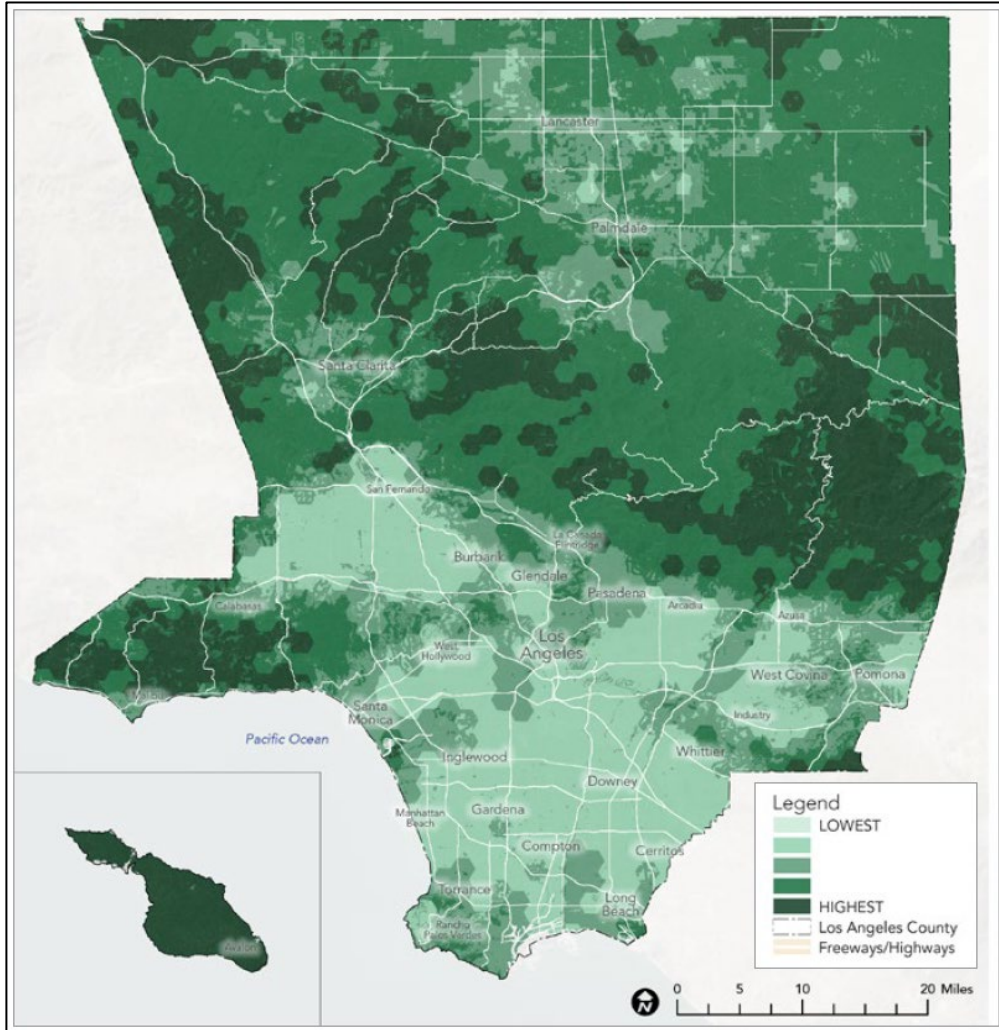
2022 Population Vulnerability



Conserve and Restore Lands

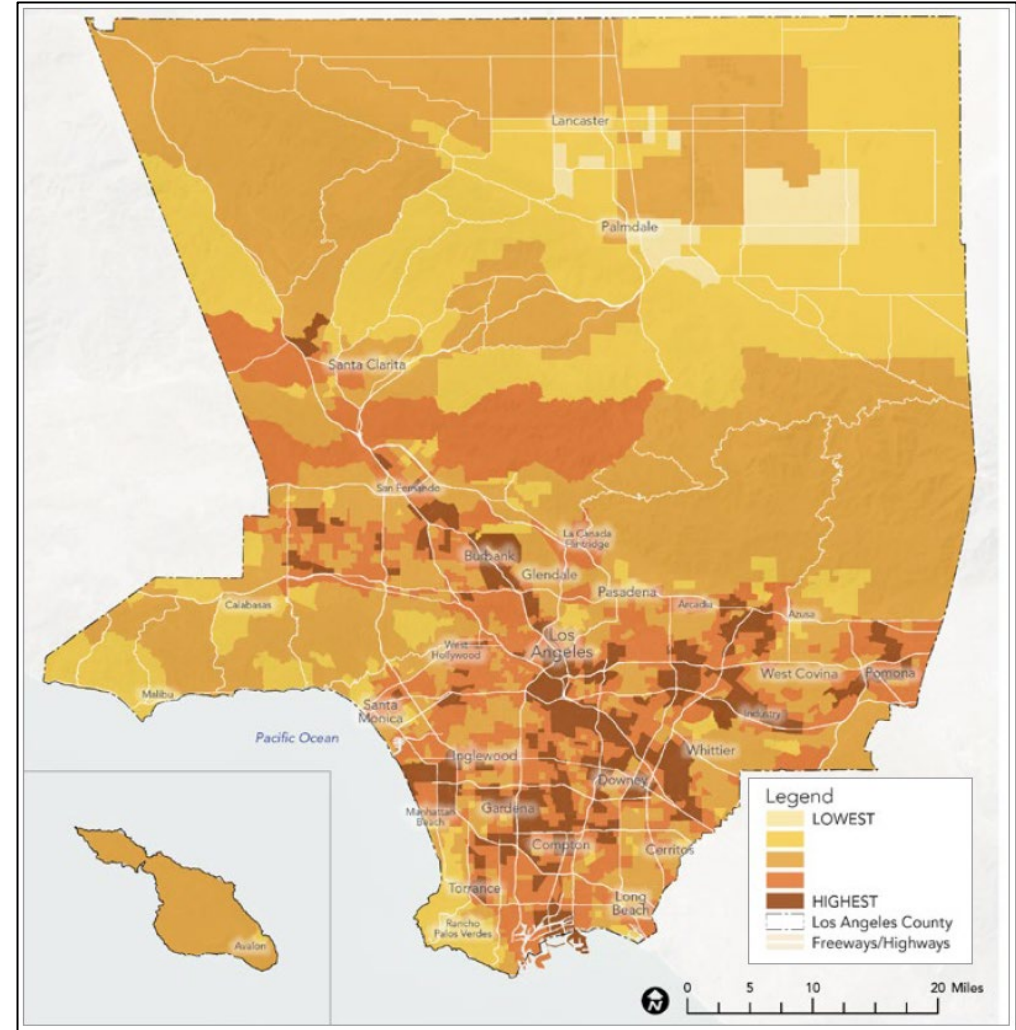
Environmental Benefits

Indicators: Species Diversity, Significant Habitat, Habitat Connectivity, Proximity to Waterbody, Habitat Type

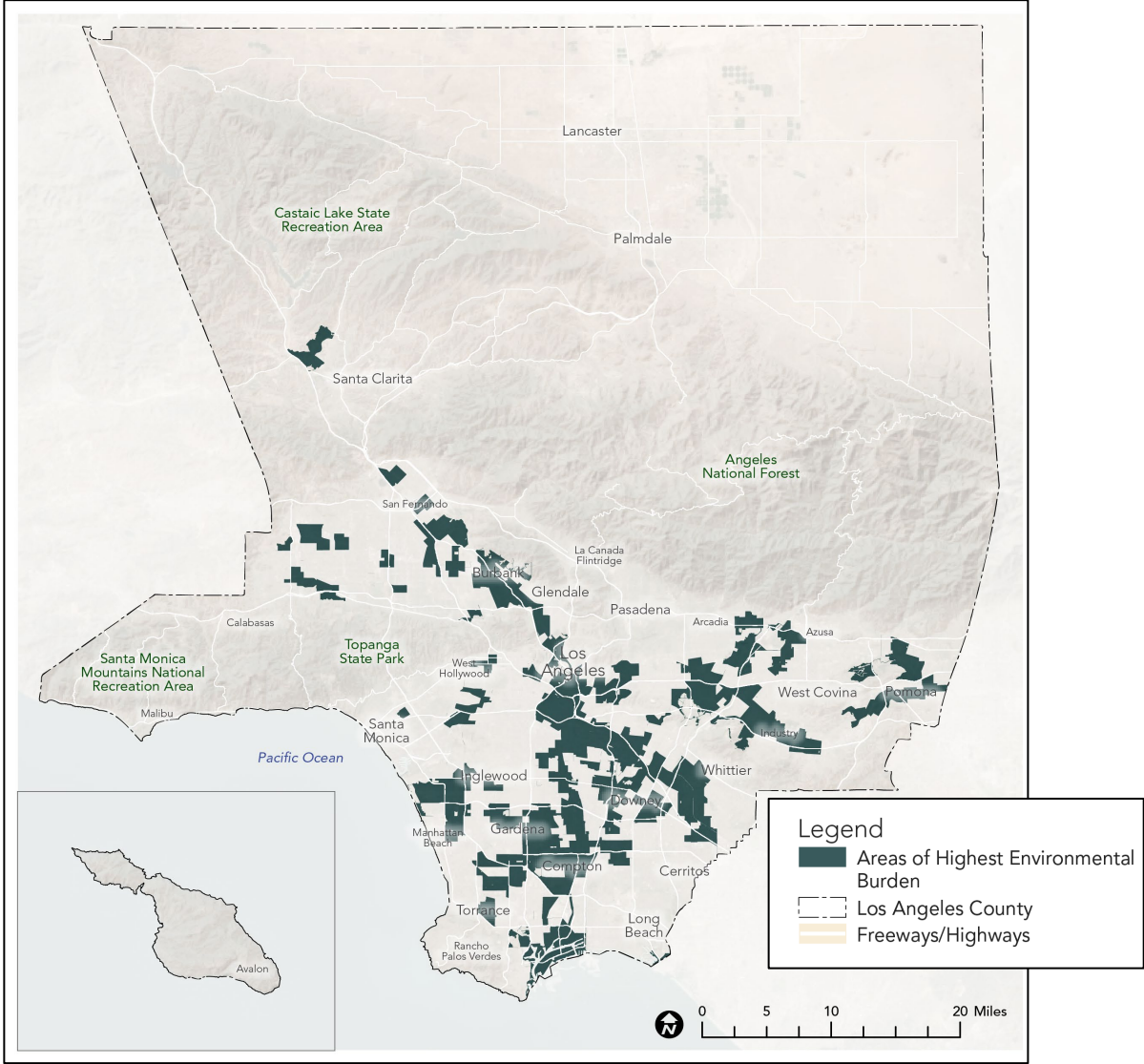
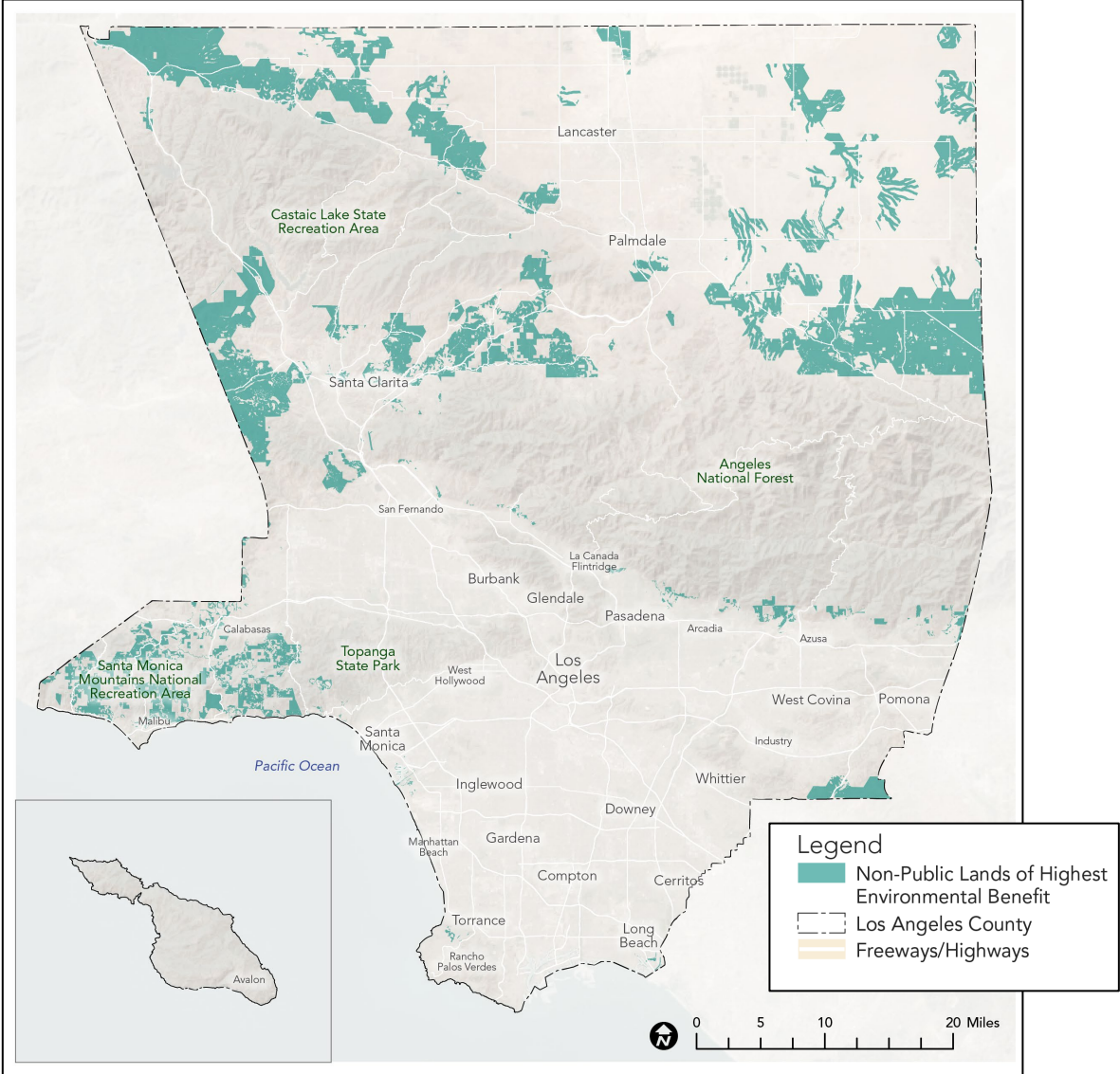


Environmental Burdens

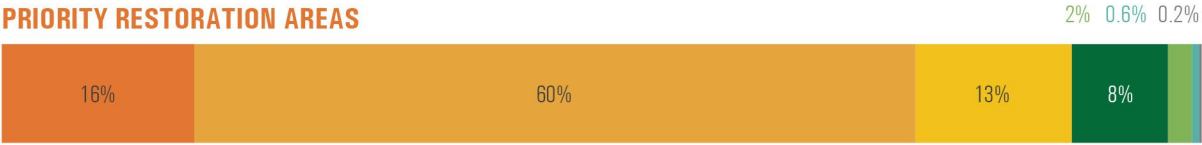
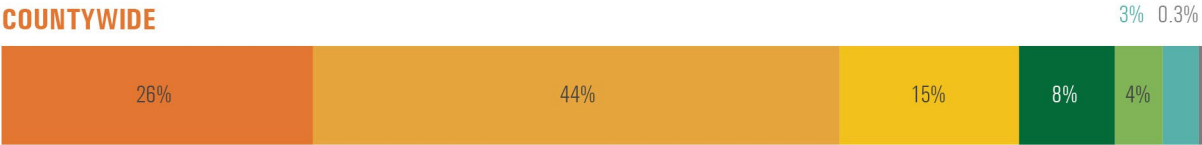
Indicators: Groundwater Threat, Hazardous Waste, Drinking Water Quality, Fine Particulate Matter, Pollution Burden



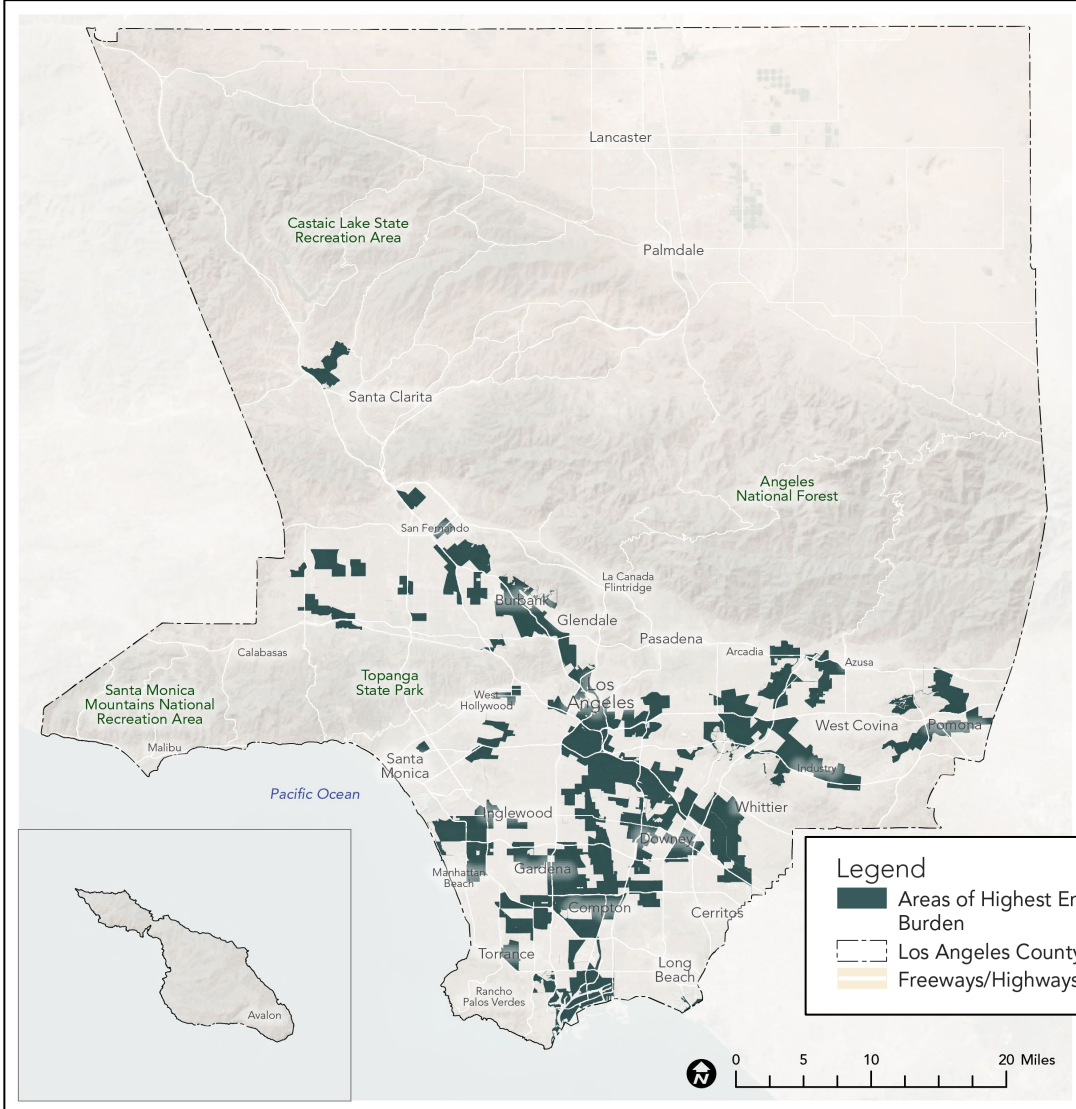
Prioritize Areas for Conservation and Restoration



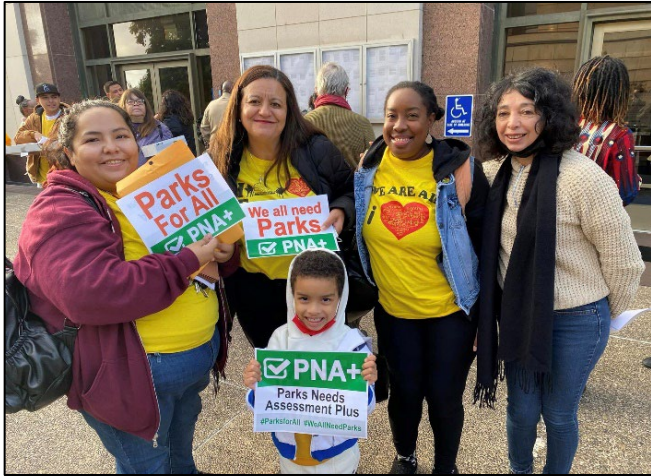
Restore Lands for Environmental Justice



84% People of Color



Take the Next Steps



PNA+
L.A. County's 30 x 30 Plan

Conservation and
Restoration

Regional
Recreation

Rural
Recreation



FUNDING PRIORITIES



ACCESS AND INFORMATION



PARK, TRAIL AND OPEN SPACE
PROVISION



COMMUNITY ENGAGEMENT



COLLABORATION AND
COORDINATION



CAPACITY BUILDING

Coalition Members

