

# Reimagine Your River, Creeks, and Streams



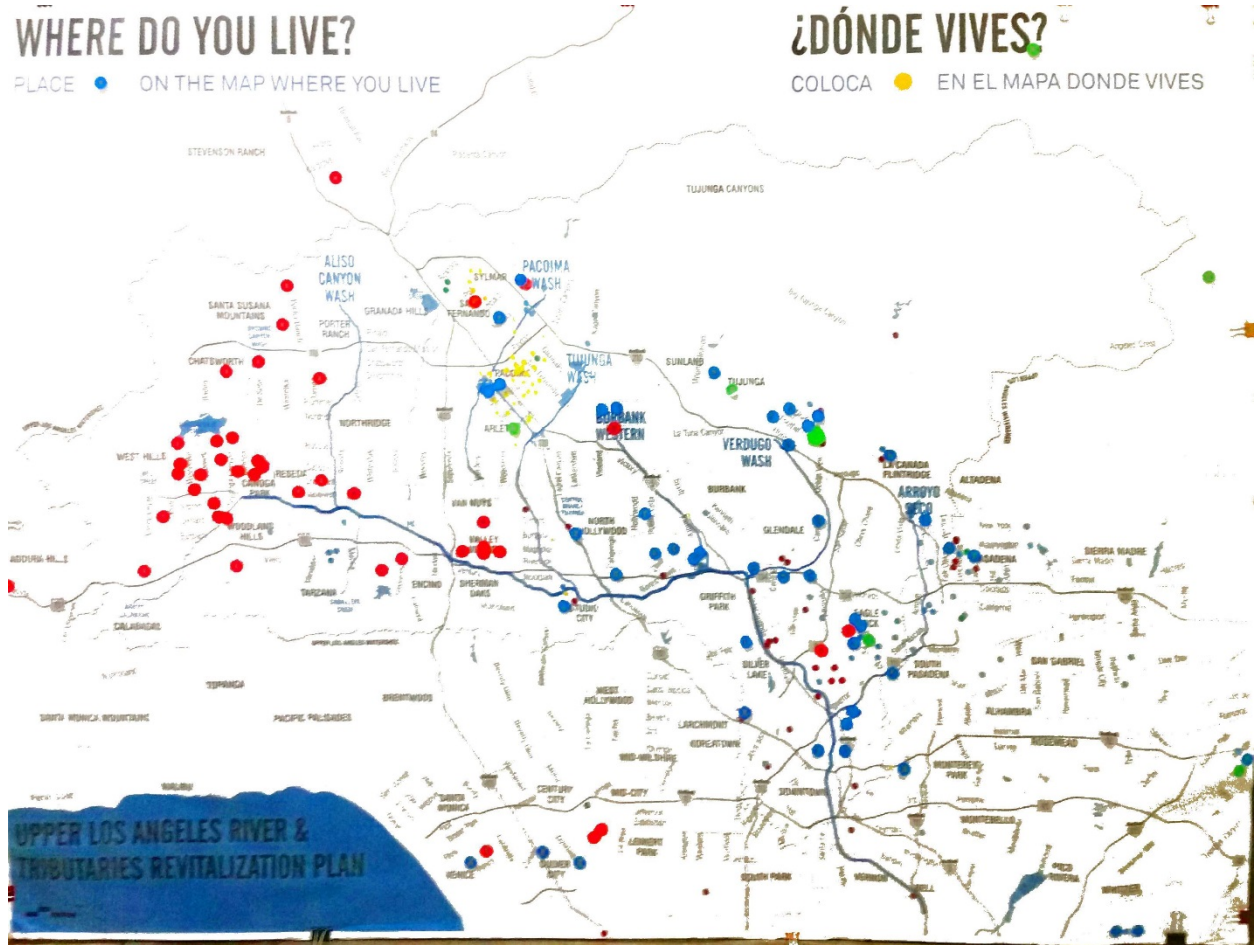
Attachment: Display Materials Input

# WHERE DO YOU LIVE?

PLACE ● ON THE MAP WHERE YOU LIVE

# ¿DÓNDE VIVES?

COLOCA ● EN EL MAPA DONDE VIVES

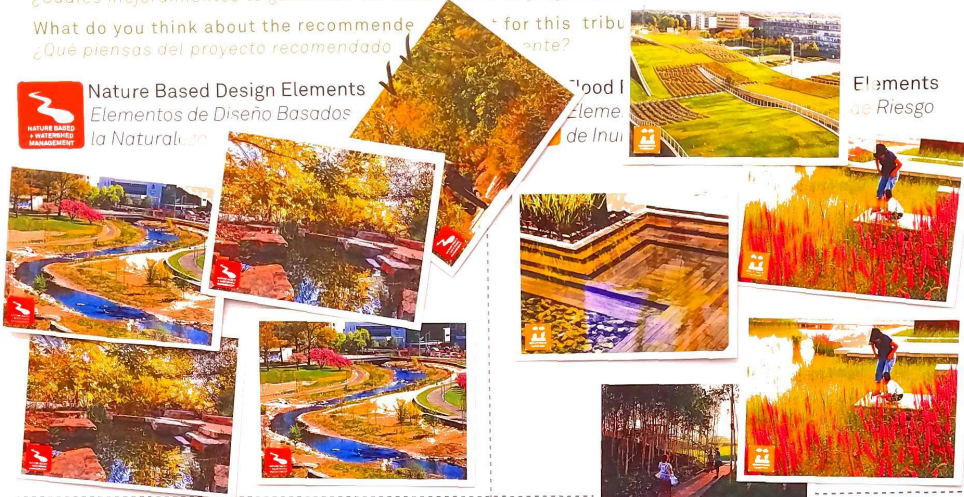


# Aliso Design Ideas Ideas de Diseño

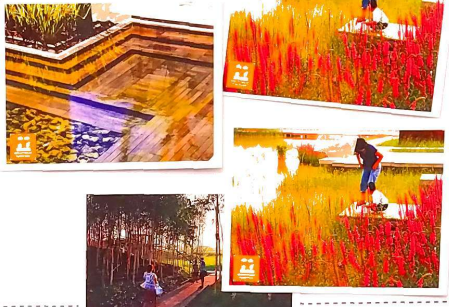
What improvements would you like to see included in the recommended project for this tributary?  
 ¿Cuales mejoramientos te gustarian ver incluidos en el proyecto recomendado para este afluente?

What do you think about the recommended project for this tributary?  
 ¿Qué piensas del proyecto recomendado para este afluente?

## Nature Based Design Elements Elementos de Diseño Basados en la Naturaleza



## Flood Risk Management Elements Elementos de Manejo de Riesgo



## Open Space Design Elements Elementos de Diseño de Espacio Abierto



## Safety Elements



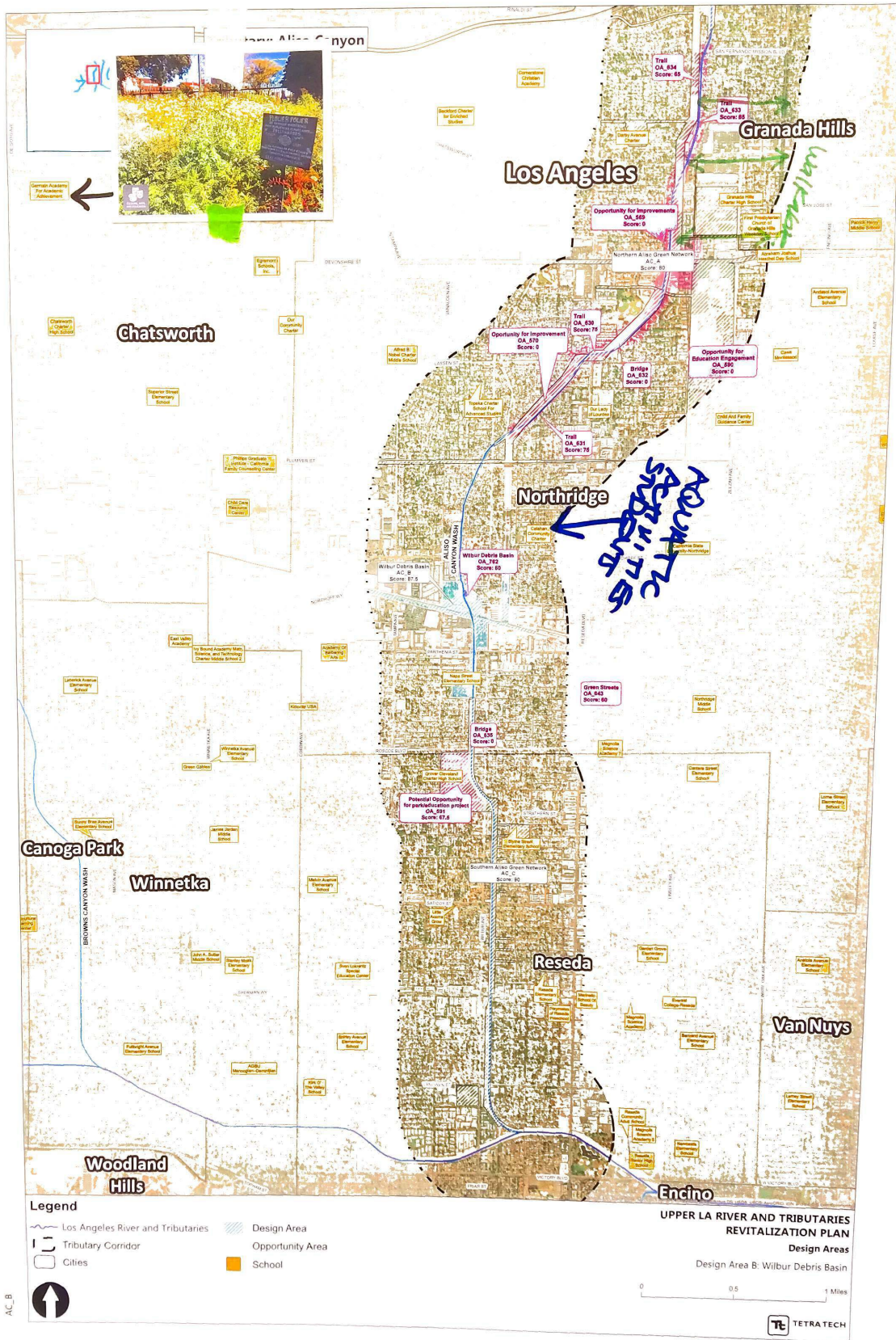
## Culture, Arts + Education Design Elements Elementos de Diseño de Cultura, Arte + Educación



## Other Otra

CSUN Partner  
 Removal of invasive species  
 Local school education  
 - Local people  
 more community discussions  
 Doggie Poopie Bags  
 Stations





Aliso Canyon Wash



# Pacoima Wash Design Ideas Ideas de Diseño Wash

What improvements would you like to see included in the recommended project for Pacoima Wash?  
 ¿Cuales mejoramientos le gustarian ver incluidos en el proyecto recomendado para este afluente?  
 What do you think about the recommended project for this tributary?  
 ¿Que piensas del proyecto recomendado para este afluente?



Nature Based Design Elements  
 Elementos de Diseño Basados en la Naturaleza



Flood Risk Management  
 Elementos de Diseño de Gestión de Riesgo de Inundaciones

• A Native Habitat.

Big TREES

• Pedestrian protection (barriers)



• Urban trails

• BIODIVERSITY (Flora/fauna)

natural spaces



→ natural structures  
 - hedges  
 - beautiful aesthetic



n Space Design Elements  
 Elementos de Diseño de Espacio Seguro

ADA accessible paths.

Safe Access Design Elements  
 Elementos de Diseño de Acceso Seguro

All: More trees

Pacoima Spreading ground (recreation opportunity)



• connectivity (bike/walking)

- Pedestrian protection
- ongoing MAINTENANCE ✖
- Restrooms
- Emergency beacon / call box

LIGHTING  
 (valens)

• LOCAL ACCESS



Culture, Arts + Education  
 Elementos de Diseño de Cultura, Arte + Educación



Other  
 Otra

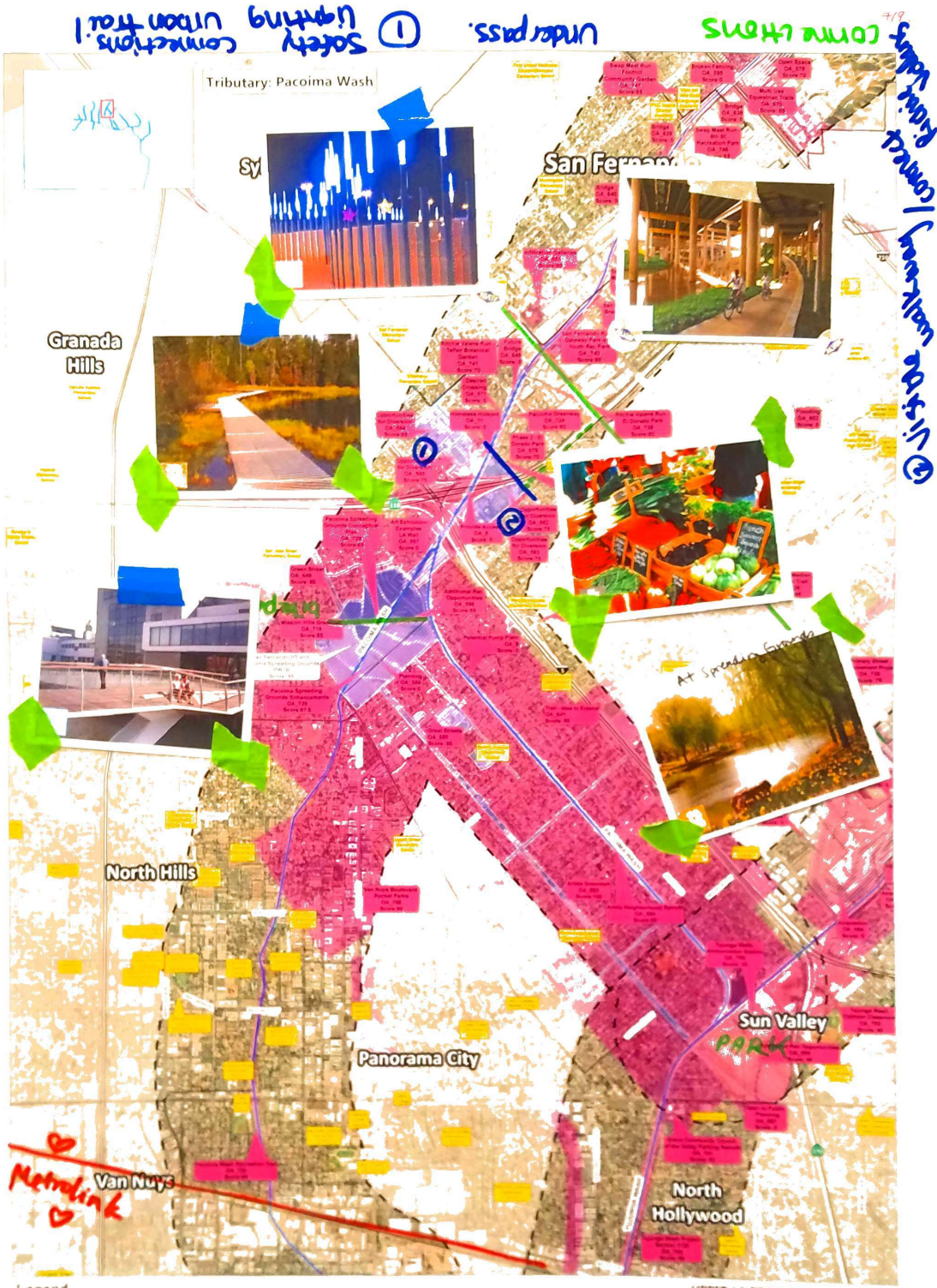
Artworks focus on local  
 local story  
 interpretive  
 local artist

Local indigenous representation  
 - education  
 - history  
 - natural diversity

• COMPLETE STREETS ✖✖  
 accessible for all.

• First Mile/Last Mile w/ new Metro Light rail.  
 • Connections to Public transpo  
 avoid displacement / gentrification ✖





**Legend**

- Orange line: Angeles River and Tributaries
- Blue line: Tributary Corridor
- Green line: Other
- Pink box: Design Area
- Yellow box: Observation Area
- Red box: School

**UPPER LA RIVER AND TRIBUTARIES REVITALIZATION PLAN**

**Design Areas**

Design Area B: San Fernando, AH and Pacoima Spreading Corridors

Pacoima Wash



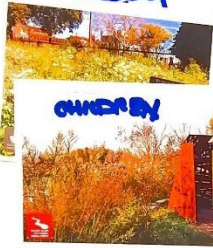
# Design Ideas Ideas de Diseño

What improvements would you like to see included in the recommended project for this tributary?  
¿Cuáles mejoramientos te gustaría ver incluidos en el proyecto recomendado para este afluente?

What do you think about the recommended project for this tributary?  
¿Qué piensas del proyecto recomendado para este afluente?

## Nature Based Design Elements Elementos de Diseño Basados en la Naturaleza

+ MARSHES, VARIOUS HOST PLANTS  
+ NATIVE PLANTS, DROUGHT-TOLERANT  
+ TEAR OUT INVASIVES  
+ UNSEEDED, NOT DEVELOPED.

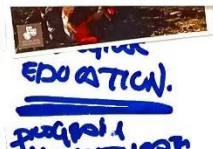


CHERRY

+ DARK TREES, BIKE SKY  
+ NURSERY LIBRARIES SCHOOLS  
+ TONGVA NATIVE PLANTS



+ PADDLE BOATS  
+ NO MOTORBOATS  
+ NO OFF-ROAD VEHICLES



EDUCATION  
PROGRAMS  
+ WORKSHOPS

## Flood Risk Management Design Elements Elementos de Diseño de Gestión de Riesgo de Inundaciones

+ LARGER FLOOD BUFFER  
+ UNDERGROUND WATER SCHEME  
+ "WATER FACTORIES"



RECHARGE MEDIT. CLIMATE  
VIEWS - SWIMMING  
ANGELS POINT

## Safe Access Design Elements Elementos de Diseño de Acceso Seguro

NO-USA ACCESS  
CLEAR TRAILS  
LIGHTING - SOLAR  
BICYCLE ACCESS (ON AIR SIDES)  
- CROSS THE ENTIRE AREA.  
UNINTERRUPTED ACCESS  
CONNECTION TO COMMUNITIES X2



DAYS USE LIGHTING HOLES SERVICES



TONGVA ACCESS!

Other  
? Otra + PR + ...  
RAIN, WATER IN  
- PUMP TO CREATE WATER PONDS  
RESERVOIRS REC  
BETTER MAINT.  
LOOK AT SPANISH DA BASIN.  
COMMUNITY WORKSHOPS  
- PLANTING  
- PLANT IS





**Tributary: Tujunga Wash**

**GRANDDAD HILLS - SECRET TRAIL**

**TRAIL DAY**  
BROWN BIBS  
ACCESS HEAD

**WALK BELLY VIEWS**

**FAMILY**  
HONORS - CRAFTS

**FUN**

**FOOD**

**BACK**

**A LOT OF LAND TO FARM**

**GENERATIONAL**

**EASY ACCESS**

**PLANTS**

**TREES**

**Wildlife Corridors & Trails with Interpretation**

**Los Angeles**

**Burbank**

**UPPER LA RIVER AND TRIBUTARIES REVITALIZATION PLAN**

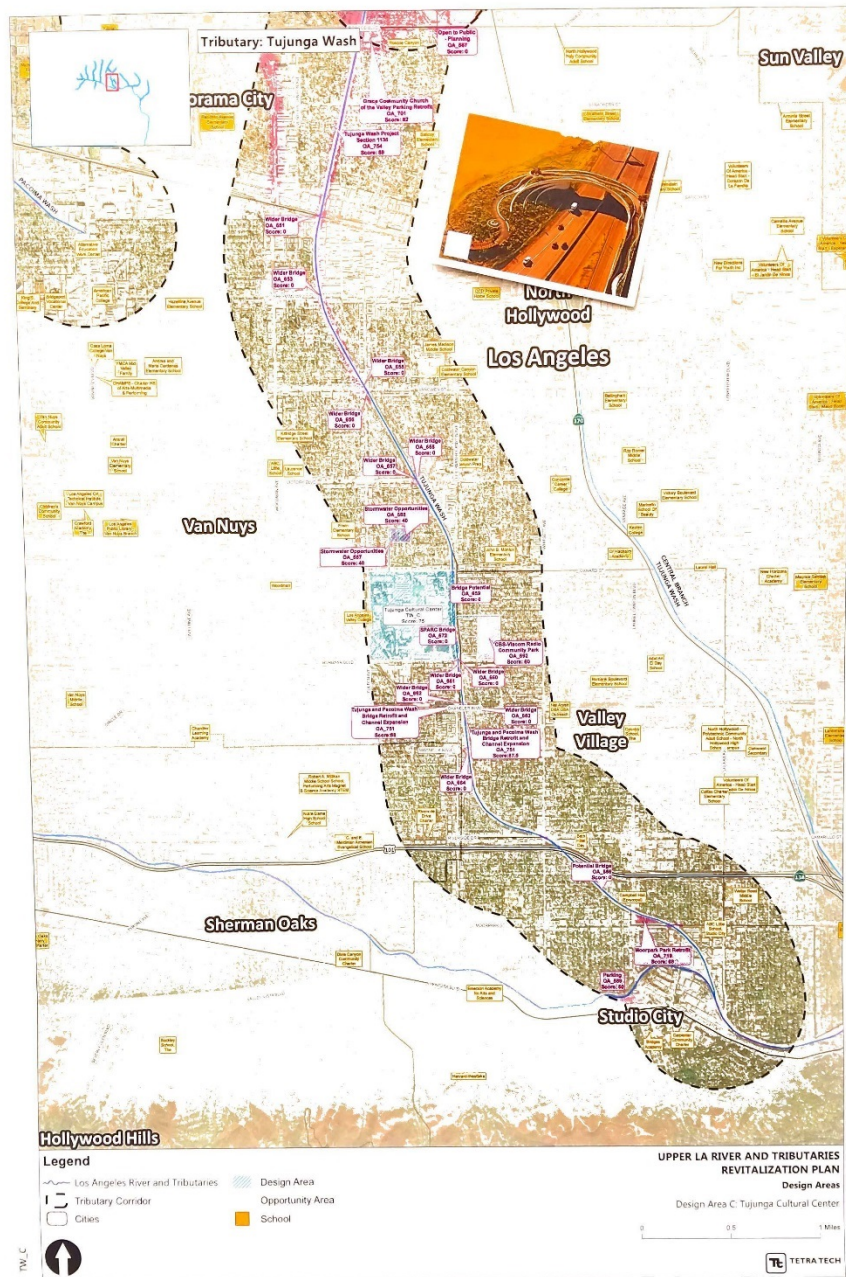
**Design Areas**  
Design Area A: Hansen Dam Lake

0 0.5 1 Miles

**TE TETRA TECH**

TW\_A





Tujunga Wash



# Burbank (1/9) Design Ideas Ideas de Diseño

What improvements would you like to see included in the recommended project for this tributary?  
 ¿Cuáles mejoramientos te gustarían ver incluidos en el proyecto recomendado para este afluente?

What do you think about the recommended project for this tributary?  
 ¿Qué piensas del proyecto recomendado para este afluente?



## Nature Based Design Elements Elementos de Diseño basados en la Naturaleza



## Flood Risk Management Design Elements Elementos de Diseño de Gestión de Riesgo de Inundaciones



## Design Elementos de Diseño



## Safe Access Design Elements Elementos de Diseño de Acceso Seguro



## Culture, Arts + Ed Elementos de Diseño Arte + Educación



## Other Otra

More trees  
 \* Area is very busy, crowded + noisy

- Green lung very appealing
- area has less investment than area C
- Lack of green space esp west of 1-5
- addressing pollution & pub health
- Pasear con la familia y mas seguridad.
- Sembrar mas
- Mas arboles
- Accesible para sillas de ruedas
- Lighting & better security
- \$ a furniture store to explain about the past



Design Area B  
I believe this  
project would  
have a greater  
environmental and  
health benefit

CONSTR  
G.C. Riv Route  
WITH ATTAPAN  
BERRY DRIVE  
G.C. MANOUS  
TO ATTAPAN

CONVERT EQ. HICKS BR



Residential concerns for  
suggested site:  
park will be located west  
to very natural/benign/softened  
Environment. Concerned of childrens  
safety. Concerned for  
Also need capacity study  
from west affect site quality

Estimate  
Easier to  
access to  
the awesome free  
Train Park!

# Design Ideas Ideas de Diseño

What improvements would you like to see included in the recommended project for this tributary?  
¿Cuales mejoramientos te gustarian ver incluidos en el proyecto recomendado para este afluente?

What do you think about the recommended project for this tributary?  
¿Qué piensas del proyecto recomendado para este afluente?



Nature Based Design Elements  
Elementos de Diseño Basados en la Naturaleza



Flood Risk Management Design Elements  
Elementos de Diseño de Gestión de Riesgo de Inundaciones



Open Space Design Elements  
Elementos de Diseño de Espacio Abierto



Access Design Elements  
Elementos de Diseño de Acceso Seguro



Culture, Arts, and Education Design Elements  
Elementos de Diseño de Cultura, Artes y Educación





# Design Ideas Ideas de Diseño

4/9

What improvements would you like to see included in the recommended project for this tributary?  
¿Cuáles mejoramientos te gustaría ver incluidos en el proyecto recomendado para este afluente?

What do you think about the recommended project for this tributary?  
¿Qué piensas del proyecto recomendado para este afluente?

## Nature Based Design Elements Elementos de Diseño Basados en la Naturaleza



## Flood Risk Management Design Elements Elementos de Diseño de Gestión de Riesgo de Inundaciones



## Open Space Design Elements Elementos de Diseño de Espacio Abierto



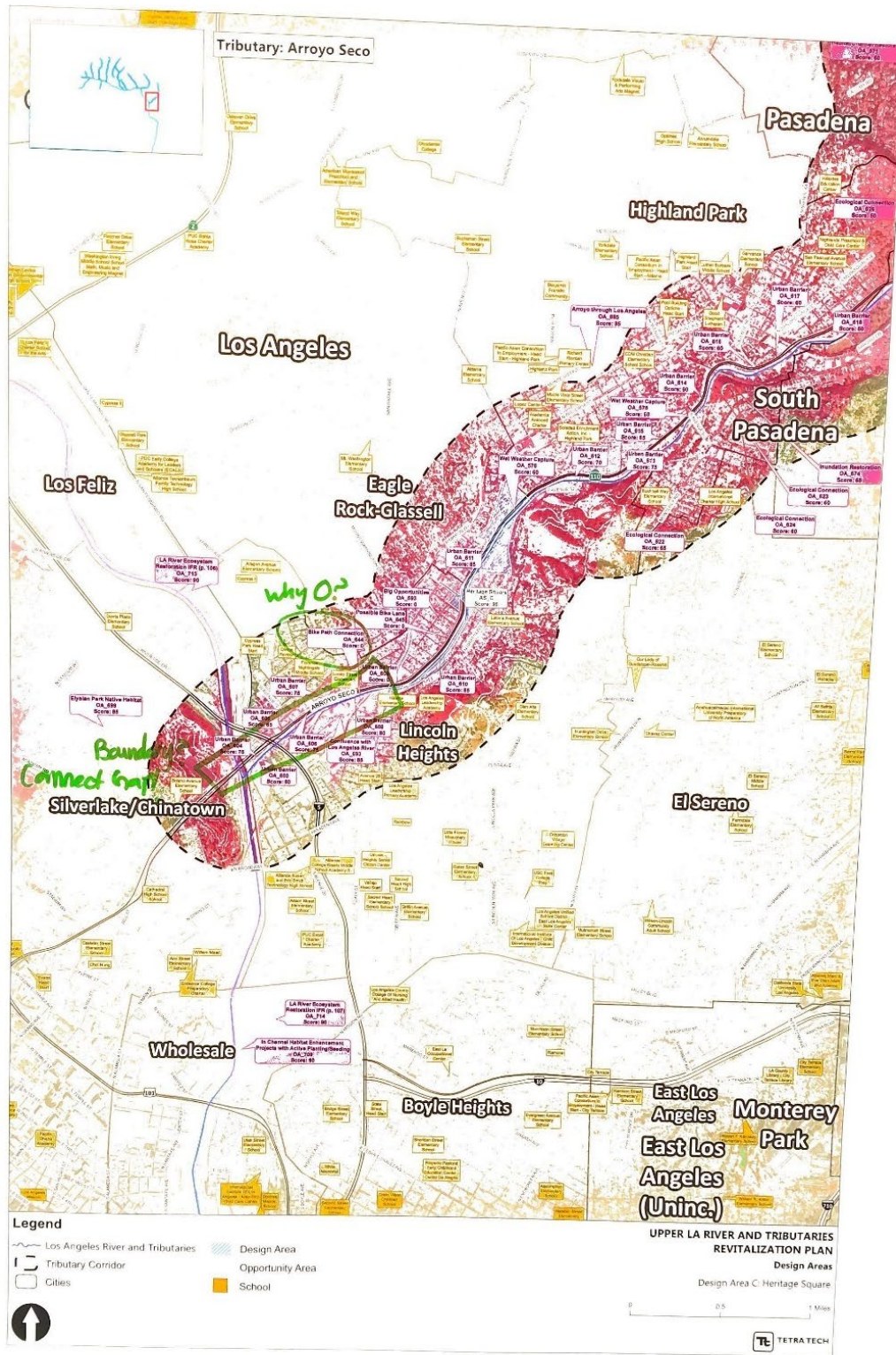
## Safe Access Design Elements Elementos de Diseño de Acceso Seguro



## Culture, Arts + Education Design Elements Elementos de Diseño de Cultura, Arte + Educación



## Other Otra





**Arroyo Seco**

**#1** What improvements would you like to see included in the recommended project for this tributary?  
*¿Cuáles mejoramientos te gustarían ver incluidos en el proyecto recomendado para este afluente?*

*Ant: - Disp la cement  
considerations*

**#2** What do you think about the recommended project for this tributary?  
*¿Qué piensas del proyecto recomendado para este afluente?*

*Connection to LA  
State Historic Park*

Questions...  
Preguntas...

**Thank You!  
¡Gracias!**

Your input tonight will shape the Upper Los Angeles River and Tributaries Revitalization Plan.  
*Tu opinión esta noche dará forma al Plan de Revitalización de La Sección Arriba del Río Los Angeles y sus afluentes*

**Pacoima Wash**

**#1** What improvements would you like to see included in the recommended project for this tributary?  
*¿Cuáles mejoramientos te gustarían ver incluidos en el proyecto recomendado para este afluente?*

**#2** What do you think about the recommended project for this tributary?  
*¿Qué piensas del proyecto recomendado para este afluente?*

**Tujunga Wash**

**#1** What improvements would you like to see included in the recommended project for this tributary?  
*¿Cuáles mejoramientos te gustarían ver incluidos en el proyecto recomendado para este afluente?*

**#2** What do you think about the recommended project for this tributary?  
*¿Qué piensas del proyecto recomendado para este afluente?*

**Reimagine Your River,  
Creeks, and Streams**



Tell us what you think about the proposed project for each tributary. Please use the spaces provided to share your ideas.

*Díganos lo que piensas sobre el proyecto propuesto para cada afluente. Por favor, usa los espacios provistos para compartir tus ideas.*

**Aliso Canyon Wash**

**#1** What improvements would you like to see included in the recommended project for this tributary?  
*¿Cuáles mejoramientos te gustarían ver incluidos en el proyecto recomendado para este afluente?*

**#2** What do you think about the recommended project for this tributary?  
*¿Qué piensas del proyecto recomendado para este afluente?*

**Burbank-Western Channel**

**#1** What improvements would you like to see included in the recommended project for this tributary?  
*¿Cuáles mejoramientos te gustarían ver incluidos en el proyecto recomendado para este afluente?*

*Green lung*

**#2** What do you think about the recommended project for this tributary?  
*¿Qué piensas del proyecto recomendado para este afluente?*

**Verdugo Wash**

**#1** What improvements would you like to see included in the recommended project for this tributary?  
*¿Cuáles mejoramientos te gustarían ver incluidos en el proyecto recomendado para este afluente?*

**#2** What do you think about the recommended project for this tributary?  
*¿Qué piensas del proyecto recomendado para este afluente?*

**Arroyo Seco**

**#1** What improvements would you like to see included in the recommended project for this tributary?  
¿Cuáles mejoramientos te gustarían ver incluidos en el proyecto recomendado para este afluente?

---

---

---

---

**#2** What do you think about the recommended project for this tributary?  
¿Qué piensas del proyecto recomendado para este afluente?

---

---

---

---

Questions...  
Preguntas...

---

---

---

---

---

**Thank You!  
¡Gracias!**

Your input tonight will shape the Upper Los Angeles River and Tributaries Revitalization Plan.  
Tu opinión esta noche dará forma al Plan de Revitalización de La Sección Arriba del Río Los Angeles y sus afluentes

**Pacoima Wash**

**#1** What improvements would you like to see included in the recommended project for this tributary?  
¿Cuáles mejoramientos te gustarían ver incluidos en el proyecto recomendado para este afluente?

Native plants/ green corridor to combat the three freeways + refineries. Also, in terms of funding I believe this area has a right to more funding than the arroyo Seco + verdugo corridor based on the environmental injustices + low median income of the area (much more disadvantaged)

**#2** What do you think about the recommended project for this tributary?  
¿Qué piensas del proyecto recomendado para este afluente?

I think this is a good location because it's more central / densely populated / the north end of this one is already getting park improvements from Lopez Canyon Landfill (sanitation). Having a green corridor is also so important in this area because of the presence of refineries throughout.

**Tujunga Wash**

**#1** What improvements would you like to see included in the recommended project for this tributary?  
¿Cuáles mejoramientos te gustarían ver incluidos en el proyecto recomendado para este afluente?

\* redirecting the water coming from the mountains to the lake. Right now the water isn't going directly in the lake causing quicksand. \*  
\* trail maintenance around Hansen dam + increase of park rangers.

**#2** What do you think about the recommended project for this tributary?  
¿Qué piensas del proyecto recomendado para este afluente?

I agree that the lake revitalization should be a priority for this plan.

**Reimagine Your River,  
Creeks, and Streams**



Tell us what you think about the proposed project for each tributary. Please use the spaces provided to share your ideas.

Díganos lo que piensas sobre el proyecto propuesto para cada afluente. Por favor, usa los espacios provistos para compartir tus ideas.

**Aliso Canyon Wash**

**#1** What improvements would you like to see included in the recommended project for this tributary?  
¿Cuáles mejoramientos te gustarían ver incluidos en el proyecto recomendado para este afluente?

Nurseries -> green space is a good idea.  
-nurseries can even downsize and only sell native plants + pocket parks can be created.  
\*- native plants where there are existing utility easement

**#2** What do you think about the recommended project for this tributary?  
¿Qué piensas del proyecto recomendado para este afluente?

I think the proposed plan for this Wash is a good idea.

**Burbank-Western Channel**

**#1** What improvements would you like to see included in the recommended project for this tributary?  
¿Cuáles mejoramientos te gustarían ver incluidos en el proyecto recomendado para este afluente?

---

---

---

---

**#2** What do you think about the recommended project for this tributary?  
¿Qué piensas del proyecto recomendado para este afluente?

---

---

---

---

**Verdugo Wash**

**#1** What improvements would you like to see included in the recommended project for this tributary?  
¿Cuáles mejoramientos te gustarían ver incluidos en el proyecto recomendado para este afluente?

---

---

---

---

**#2** What do you think about the recommended project for this tributary?  
¿Qué piensas del proyecto recomendado para este afluente?

---

---

---

---



### Arroyo Seco

**#1** What improvements would you like to see included in the recommended project for this tributary?  
¿Cuáles mejoramientos te gustarían ver incluidos en el proyecto recomendado para este afluente?

- improve the green canopy
- more shade.
- more green.

**#2** What do you think about the recommended project for this tributary?  
¿Qué piensas del proyecto recomendado para este afluente?

- great idea

Questions...  
Preguntas...

### Thank You! ¡Gracias!

Your input tonight will shape the Upper Los Angeles River and Tributaries Revitalization Plan.  
Tu opinión esta noche dará forma al Plan de Revitalización de La Sección Arriba del Río Los Angeles y sus afluentes

### Pacoima Wash

**#1** What improvements would you like to see included in the recommended project for this tributary?  
¿Cuáles mejoramientos te gustarían ver incluidos en el proyecto recomendado para este afluente?

- more walking paths.
- improve green canopy

**#2** What do you think about the recommended project for this tributary?  
¿Qué piensas del proyecto recomendado para este afluente?

- love the idea of more community events
- improve access to ~~the~~ green areas

### Tujunga Wash

**#1** What improvements would you like to see included in the recommended project for this tributary?  
¿Cuáles mejoramientos te gustarían ver incluidos en el proyecto recomendado para este afluente?

---



---



---

**#2** What do you think about the recommended project for this tributary?  
¿Qué piensas del proyecto recomendada para este afluente?

---



---



---

## Reimagine Your River, Creeks, and Streams



Tell us what you think about the proposed project for each tributary. Please use the spaces provided to share your ideas.

Díganos lo que piensas sobre el proyecto propuesto para cada afluente. Por favor, usa los espacios provistos para compartir tus ideas.

### Aliso Canyon Wash

**#1** What improvements would you like to see included in the recommended project for this tributary?  
¿Cuáles mejoramientos te gustarían ver incluidos en el proyecto recomendado para este afluente?

- increase the walking paths.

**#2** What do you think about the recommended project for this tributary?  
¿Qué piensas del proyecto recomendado para este afluente?

- great ideas.

### Burbank-Western Channel

**#1** What improvements would you like to see included in the recommended project for this tributary?  
¿Cuáles mejoramientos te gustarían ver incluidos en el proyecto recomendado para este afluente?

---



---



---

**#2** What do you think about the recommended project for this tributary?  
¿Qué piensas del proyecto recomendado para este afluente?

---



---



---

### Verdugo Wash

**#1** What improvements would you like to see included in the recommended project for this tributary?  
¿Cuáles mejoramientos te gustarían ver incluidos en el proyecto recomendado para este afluente?

---



---



---

**#2** What do you think about the recommended project for this tributary?  
¿Qué piensas del proyecto recomendada para este afluente?

---



---



---

## Arroyo Seco

**#1** What improvements would you like to see included in the recommended project for this tributary?  
¿Cuáles mejoramientos te gustarían ver incluidos en el proyecto recomendado para este afluente?

Bring it back to nature as much as possible but please educate people on how to respect nature.

**#2** What do you think about the recommended project for this tributary?  
¿Qué piensas del proyecto recomendado para este afluente?

Very good. Please consider natural barriers/water filtration (stones & native plants) instead of concrete.

Questions...  
Preguntas...

## Thank You! ¡Gracias!

Your input tonight will shape the Upper Los Angeles River and Tributaries Revitalization Plan.  
Tu opinión esta noche dará forma al Plan de Revitalización de La Sección Arriba del Río Los Angeles y sus afluentes

## Pacoima Wash

**#1** What improvements would you like to see included in the recommended project for this tributary?  
¿Cuáles mejoramientos te gustarían ver incluidos en el proyecto recomendado para este afluente?

Clean water, Equestrian + hiker friendly, as natural as possible. (less concrete). Natural/native plants + gardening opportunities.

**#2** What do you think about the recommended project for this tributary?  
¿Qué piensas del proyecto recomendado para este afluente?

I'm concerned about over-use. Currently Housen Den isn't available to many of us residents.

## Tujunga Wash

**#1** What improvements would you like to see included in the recommended project for this tributary?  
¿Cuáles mejoramientos te gustarían ver incluidos en el proyecto recomendado para este afluente?

Natural, natural, natural please. This is currently the best place for hiking. Swimming in clean water would be wonderful!

**#2** What do you think about the recommended project for this tributary?  
¿Qué piensas del proyecto recomendado para este afluente?

Nice but please limit building structures. educate people about responsible usage to keep it clean.

## Reimagine Your River, Creeks, and Streams



Tell us what you think about the proposed project for each tributary. Please use the spaces provided to share your ideas.

Díganos lo que piensas sobre el proyecto propuesto para cada afluente. Por favor, usa los espacios provistos para compartir tus ideas.

## Aliso Canyon Wash

**#1** What improvements would you like to see included in the recommended project for this tributary?  
¿Cuáles mejoramientos te gustarían ver incluidos en el proyecto recomendado para este afluente?

This area is good for encouraging recreation use, keep things as natural as possible. Less concrete, no plastic.

**#2** What do you think about the recommended project for this tributary?  
¿Qué piensas del proyecto recomendado para este afluente?

I like most ideas but wish to limit harmful chemicals that concrete & other building materials contribute.

## Burbank-Western Channel

**#1** What improvements would you like to see included in the recommended project for this tributary?  
¿Cuáles mejoramientos te gustarían ver incluidos en el proyecto recomendado para este afluente?

More open area to hike, natural + native plants.

**#2** What do you think about the recommended project for this tributary?  
¿Qué piensas del proyecto recomendado para este afluente?

Good. Keep designs as natural as possible.

## Verdugo Wash

**#1** What improvements would you like to see included in the recommended project for this tributary?  
¿Cuáles mejoramientos te gustarían ver incluidos en el proyecto recomendado para este afluente?

Clean water, native plants, shade, hiking trails.

**#2** What do you think about the recommended project for this tributary?  
¿Qué piensas del proyecto recomendado para este afluente?

Keep concrete/building to a minimum.



**Arroyo Seco**

**#1** What improvements would you like to see included in the recommended project for this tributary?  
¿Cuáles mejoramientos te gustarian ver incluidos en el proyecto recomendado para este afluente?

---

---

---

**#2** What do you think about the recommended project for this tributary?  
¿Qué piensas del proyecto recomendado para este afluente?

---

---

---

Questions...  
Preguntas...

---

---

---

---

**Thank You!  
¡Gracias!**

Your input tonight will shape the Upper Los Angeles River and Tributaries Revitalization Plan.  
Tu opinión esta noche dará forma al Plan de Revitalización de La Sección Arriba del Río Los Angeles y sus afluentes

**Pacoima Wash**

**#1** What improvements would you like to see included in the recommended project for this tributary?  
¿Cuáles mejoramientos te gustarian ver incluidos en el proyecto recomendado para este afluente?

Más limpieza y seguridad más  
Arbolado y más árboles

**#2** What do you think about the recommended project for this tributary?  
¿Qué piensas del proyecto recomendado para este afluente?

Es muy atractivo mas igual mas  
seguridad y limpieza

**Tujunga Wash**

**#1** What improvements would you like to see included in the recommended project for this tributary?  
¿Cuáles mejoramientos te gustarian ver incluidos en el proyecto recomendado para este afluente?

---

---

---

**#2** What do you think about the recommended project for this tributary?  
¿Qué piensas del proyecto recomendado para este afluente?

---

---

---

**Reimagine Your River,  
Creeks, and Streams**



Tell us what you think about the proposed project for each tributary. Please use the spaces provided to share your ideas.

Díganos lo que piensas sobre el proyecto propuesto para cada afluente. Por favor, usa los espacios provistos para compartir tus ideas.

**Aliso Canyon Wash**

**#1** What improvements would you like to see included in the recommended project for this tributary?  
¿Cuáles mejoramientos te gustarian ver incluidos en el proyecto recomendado para este afluente?

Más limpieza por que hay mucha basura

**#2** What do you think about the recommended project for this tributary?  
¿Qué piensas del proyecto recomendado para este afluente?

El proyecto es muy atractivo pero me gustaría que no hubiera acceso para personas indigentes

**Burbank-Western Channel**

**#1** What improvements would you like to see included in the recommended project for this tributary?  
¿Cuáles mejoramientos te gustarian ver incluidos en el proyecto recomendado para este afluente?

No estoy muy familiarizada con esa comunidad por eso no puedo opinar

**#2** What do you think about the recommended project for this tributary?  
¿Qué piensas del proyecto recomendado para este afluente?

---

---

---

**Verdugo Wash**

**#1** What improvements would you like to see included in the recommended project for this tributary?  
¿Cuáles mejoramientos te gustarian ver incluidos en el proyecto recomendado para este afluente?

---

---

---

**#2** What do you think about the recommended project for this tributary?  
¿Qué piensas del proyecto recomendado para este afluente?

---

---

---

### Arroyo Seco

**#1** What improvements would you like to see included in the recommended project for this tributary?  
¿Cuáles mejoramientos te gustarían ver incluidos en el proyecto recomendado para este afluente?

More Conservancy for <sup>the</sup> ~~conservation~~, including Historic Park  
& Water Trails. There are 5 more bridges along the Arroyo  
Seco, including LA's oldest - Arroyo Seco Span at York Bldg -  
built in 1906!

**#2** What do you think about the recommended project for this tributary?  
¿Qué piensas del proyecto recomendado para este afluente?

#### Additional Comments: Preguntas...

The City has bought the US Nat. Forests, Arroyo  
Hollows Can Be Shared With Trails. Are we allowed to have  
Salary Reduction at Same! The National Association + Conservancy  
Trails will Volunteer for trails to be built for these  
recreation trails. After the years 1934-1938. You know these  
trails that became a historic obstacle course for hikers. All  
your plans lack the 'Citizen Snowmelt' 'Conservation' Point

**Thank You!** Do not know how to be hard on nature & just  
**¡Gracias!** <sup>the</sup> ~~problem~~ <sup>problem</sup>. <sup>problem</sup>.  
Failure. New maintenance will not solve that  
problem.

Your input tonight will shape the Upper Los Angeles River and Tributaries  
Revitalization Plan.  
Tu opinión esta noche dará forma al Plan de Revitalización de La Sección Arriba del  
Río Los Angeles y sus afluentes

### Pacoima Wash

**#1** What improvements would you like to see included in the recommended project for this tributary?  
¿Cuáles mejoramientos te gustarían ver incluidos en el proyecto recomendado para este afluente?

Look for Conservancy for Historic Family Trails.

**#2** What do you think about the recommended project for this tributary?  
¿Qué piensas del proyecto recomendado para este afluente?

### Tujunga Wash

**#1** What improvements would you like to see included in the recommended project for this tributary?  
¿Cuáles mejoramientos te gustarían ver incluidos en el proyecto recomendado para este afluente?

Look for Conservancy for Historic Family Trails.

**#2** What do you think about the recommended project for this tributary?  
¿Qué piensas del proyecto recomendado para este afluente?

## Reimagine Your River, Creeks, and Streams



Tell us what you think about the proposed project for each tributary. Please use the spaces provided to share your ideas.

Díganos lo que piensas sobre el proyecto propuesto para cada afluente. Por favor, usa los espacios provistos para compartir tus ideas.

### Aliso Canyon Wash

**#1** What improvements would you like to see included in the recommended project for this tributary?  
¿Cuáles mejoramientos te gustarían ver incluidos en el proyecto recomendado para este afluente?

Look for Conservancy for Historic Family Trails.

**#2** What do you think about the recommended project for this tributary?  
¿Qué piensas del proyecto recomendado para este afluente?

### Burbank-Western Channel

**#1** What improvements would you like to see included in the recommended project for this tributary?  
¿Cuáles mejoramientos te gustarían ver incluidos en el proyecto recomendado para este afluente?

Look for Conservancy for Historic Family Trails.

**#2** What do you think about the recommended project for this tributary?  
¿Qué piensas del proyecto recomendado para este afluente?

### Verdugo Wash

**#1** What improvements would you like to see included in the recommended project for this tributary?  
¿Cuáles mejoramientos te gustarían ver incluidos en el proyecto recomendado para este afluente?

Look for Conservancy for Historic Family Trails.

**#2** What do you think about the recommended project for this tributary?  
¿Qué piensas del proyecto recomendado para este afluente?



### Arroyo Seco

**#1** What improvements would you like to see included in the recommended project for this tributary?  
¿Cuáles mejoramientos te gustaría ver incluidos en el proyecto recomendado para este afluente?

---

---

---

**#2** What do you think about the recommended project for this tributary?  
¿Qué piensas del proyecto recomendado para este afluente?

---

---

---

Questions...  
Preguntas...

---

---

---

### Thank You! ¡Gracias!

Your input tonight will shape the Upper Los Angeles River and Tributaries Revitalization Plan.  
Tu opinión esta noche dará forma al Plan de Revitalización de La Sección Arriba del Río Los Angeles y sus afluentes

### Pacoima Wash

**#1** What improvements would you like to see included in the recommended project for this tributary?  
¿Cuáles mejoramientos te gustaría ver incluidos en el proyecto recomendado para este afluente?

Recreation opportunities along spreading grounds for aquatic activities, multi use paths, open to all people, no chainlink fence, connectivity to local access, greening native plants

**#2** What do you think about the recommended project for this tributary?  
¿Qué piensas del proyecto recomendado para este afluente?

I love the idea of connecting the Pacoima Wash w/ the community, currently it is an eye sore & has so much potential for to provide community & ecosystem services!! The community deserves green open space accessible to all.

### Tujunga Wash

**#1** What improvements would you like to see included in the recommended project for this tributary?  
¿Cuáles mejoramientos te gustaría ver incluidos en el proyecto recomendado para este afluente?

Farmers market, classes, lake actually be a lake! Boating, fishing, natural walk ways

**#2** What do you think about the recommended project for this tributary?  
¿Qué piensas del proyecto recomendado para este afluente?

Has a lot of potential... restoration of the lake = important

## Reimagine Your River, Creeks, and Streams



Tell us what you think about the proposed project for each tributary. Please use the spaces provided to share your ideas.

Díganos lo que piensas sobre el proyecto propuesto para cada afluente. Por favor, usa los espacios provistos para compartir tus ideas.

### Aliso Canyon Wash

**#1** What improvements would you like to see included in the recommended project for this tributary?  
¿Cuáles mejoramientos te gustaría ver incluidos en el proyecto recomendado para este afluente?

Naturalized ~~water~~ waterways & multi use paths  
connectivity to places where ppl already reside AKA Chatsworth St.

**#2** What do you think about the recommended project for this tributary?  
¿Qué piensas del proyecto recomendado para este afluente?

---

---

---

### Burbank-Western Channel

**#1** What improvements would you like to see included in the recommended project for this tributary?  
¿Cuáles mejoramientos te gustaría ver incluidos en el proyecto recomendado para este afluente?

---

---

---

**#2** What do you think about the recommended project for this tributary?  
¿Qué piensas del proyecto recomendado para este afluente?

---

---

---

### Verdugo Wash

**#1** What improvements would you like to see included in the recommended project for this tributary?  
¿Cuáles mejoramientos te gustaría ver incluidos en el proyecto recomendado para este afluente?

---

---

---

**#2** What do you think about the recommended project for this tributary?  
¿Qué piensas del proyecto recomendado para este afluente?

---

---

---

### Arroyo Seco

**#1** What improvements would you like to see included in the recommended project for this tributary?  
¿Cuáles mejoramientos te gustaría ver incluidos en el proyecto recomendado para este afluente?

---

---

---

**#2** What do you think about the recommended project for this tributary?  
¿Qué piensas del proyecto recomendado para este afluente?

---

---

---

Questions...  
Preguntas...

---

---

---

---

### Thank You! ¡Gracias!

Your input tonight will shape the Upper Los Angeles River and Tributaries Revitalization Plan.  
Tu opinión esta noche dará forma al Plan de Revitalización de La Sección Arriba del Río Los Angeles y sus afluentes

### Pacoima Wash

**#1** What improvements would you like to see included in the recommended project for this tributary?  
¿Cuáles mejoramientos te gustaría ver incluidos en el proyecto recomendado para este afluente?

- we need to prioritize this region
- public art of local artist through-out
- walk path / bike path / - California naturopaths
- seating for senior citizens

**#2** What do you think about the recommended project for this tributary?  
¿Qué piensas del proyecto recomendado para este afluente?

---

---

---

### Tujunga Wash

**#1** What improvements would you like to see included in the recommended project for this tributary?  
¿Cuáles mejoramientos te gustaría ver incluidos en el proyecto recomendado para este afluente?

- We love hansen am / the food / the history
- make it safer - No more
- open space - community garden
- do not remove the recreational equipment

**#2** What do you think about the recommended project for this tributary?  
¿Qué piensas del proyecto recomendado para este afluente?

keep it a hybrid of recreational & open space its possible

## Reimagine Your River, Creeks, and Streams



Tell us what you think about the proposed project for each tributary. Please use the spaces provided to share your ideas.

Díganos lo que piensas sobre el proyecto propuesto para cada afluente. Por favor, usa los espacios provistos para compartir tus ideas.

### Aliso Canyon Wash

**#1** What improvements would you like to see included in the recommended project for this tributary?  
¿Cuáles mejoramientos te gustaría ver incluidos en el proyecto recomendado para este afluente?

- connect paths for bikers & walkers to get to place like CSUV <sup>more</sup>
- lighting should be increased everywhere via solar or some type of renewable energy given the amount of theft in the region.
- connect to the orange orange line in Reseda.

**#2** What do you think about the recommended project for this tributary?  
¿Qué piensas del proyecto recomendado para este afluente?

---

---

---

### Burbank-Western Channel

**#1** What improvements would you like to see included in the recommended project for this tributary?  
¿Cuáles mejoramientos te gustaría ver incluidos en el proyecto recomendado para este afluente?

This region is not park poor

**#2** What do you think about the recommended project for this tributary?  
¿Qué piensas del proyecto recomendado para este afluente?

This region is not park poor.

### Verdugo Wash

**#1** What improvements would you like to see included in the recommended project for this tributary?  
¿Cuáles mejoramientos te gustaría ver incluidos en el proyecto recomendado para este afluente?

---

---

---

**#2** What do you think about the recommended project for this tributary?  
¿Qué piensas del proyecto recomendado para este afluente?

---

---

---



**Arroyo Seco**

**#1** What improvements would you like to see included in the recommended project for this tributary?  
¿Cuáles mejoramientos te gustarían ver incluidos en el proyecto recomendado para este afluente?

*Connections to metro from area  
water way*

**#2** What do you think about the recommended project for this tributary?  
¿Qué piensas del proyecto recomendado para este afluente?

*may have a negative impact on the lower end if  
not looked at carefully*

Questions...  
Preguntas...

**Thank You!  
¡Gracias!**

Your input tonight will shape the Upper Los Angeles River and Tributaries Revitalization Plan.  
Tu opinión esta noche dará forma al Plan de Revitalización de La Sección Arriba del Río Los Angeles y sus afluentes

**Pacoima Wash**

**#1** What improvements would you like to see included in the recommended project for this tributary?  
¿Cuáles mejoramientos te gustarían ver incluidos en el proyecto recomendado para este afluente?

*More bridges crossing river  
safer areas for people to enjoy the area*

**#2** What do you think about the recommended project for this tributary?  
¿Qué piensas del proyecto recomendado para este afluente?

*lots of good ideas*

**Tujunga Wash**

**#1** What improvements would you like to see included in the recommended project for this tributary?  
¿Cuáles mejoramientos te gustarían ver incluidos en el proyecto recomendado para este afluente?

*More recreational - boating, Kayaking*

**#2** What do you think about the recommended project for this tributary?  
¿Qué piensas del proyecto recomendado para este afluente?

*Good idea*

**Reimagine Your River,  
Creeks, and Streams**



Tell us what you think about the proposed project for each tributary. Please use the spaces provided to share your ideas.

Díganos lo que piensas sobre el proyecto propuesto para cada afluente. Por favor, usa los espacios provistos para compartir tus ideas.

**Aliso Canyon Wash**

**#1** What improvements would you like to see included in the recommended project for this tributary?  
¿Cuáles mejoramientos te gustarían ver incluidos en el proyecto recomendado para este afluente?

\_\_\_\_\_  
\_\_\_\_\_  
\_\_\_\_\_

**#2** What do you think about the recommended project for this tributary?  
¿Qué piensas del proyecto recomendado para este afluente?

\_\_\_\_\_  
\_\_\_\_\_  
\_\_\_\_\_

**Burbank-Western Channel**

**#1** What improvements would you like to see included in the recommended project for this tributary?  
¿Cuáles mejoramientos te gustarían ver incluidos en el proyecto recomendado para este afluente?

*Cultural*

**#2** What do you think about the recommended project for this tributary?  
¿Qué piensas del proyecto recomendado para este afluente?

*seems a bit complicated*

**Verdugo Wash**

**#1** What improvements would you like to see included in the recommended project for this tributary?  
¿Cuáles mejoramientos te gustarían ver incluidos en el proyecto recomendado para este afluente?

*Notable to get the idea*

**#2** What do you think about the recommended project for this tributary?  
¿Qué piensas del proyecto recomendado para este afluente?

\_\_\_\_\_  
\_\_\_\_\_  
\_\_\_\_\_

## Arroyo Seco

**#1** What improvements would you like to see included in the recommended project for this tributary?  
¿Cuáles mejoramientos te gustarían ver incluidos en el proyecto recomendado para este afluente?

SOFTEN UP AREAS AND MAKING A DESIGN WORK W/  
INCORPORATING IT WITH EXISTING CONCRETE CONDUIT/W

**#2** What do you think about the recommended project for this tributary?  
¿Qué piensas del proyecto recomendado para este afluente?

How Will You preserve Historical Elements Ex. BRIDGE?

Questions...  
Preguntas...

## Thank You! ¡Gracias!

Your input tonight will shape the Upper Los Angeles River and Tributaries Revitalization Plan.  
Tu opinión esta noche dará forma al Plan de Revitalización de La Sección Arriba del Río Los Angeles y sus afluentes

## Pacoima Wash

**#1** What improvements would you like to see included in the recommended project for this tributary?  
¿Cuáles mejoramientos te gustarían ver incluidos en el proyecto recomendado para este afluente?

THE OPPORTUNITY FOR COMMUNITY ACCESS TO EDUCATION  
STRUCTURES THAT CAN BE USED FOR DIFF. ACTIVITY, EDUCATION,  
STILLING MORE GROWN GARDENS. WE NEED SAFETY FOR PEOPLE  
OPEN SPACE, LIGHTING, PLANTS, SHADED AREAS TO KEEP COOL

**#2** What do you think about the recommended project for this tributary?  
¿Qué piensas del proyecto recomendado para este afluente?

MY FAVORITE OUR COMMUNITY IS DUE FOR SOMETHING LIKE  
THIS WE NEED TO INSPIRE OUR PEOPLE AND SHOW THEM SPACES  
THAT ALLOW FOR AFTERNOON STROLLS, ACTIVITY, ENTERTAINMENT  
YEAR ROUND!

## Tujunga Wash

**#1** What improvements would you like to see included in the recommended project for this tributary?  
¿Cuáles mejoramientos te gustarían ver incluidos en el proyecto recomendado para este afluente?

SAFETY IS A BIG CONCERN  
FLOODING, REMEMBER THE TUJUNGA RIVER USED TO PASS  
THROUGH HERE SO SOMETHING THAT CAN BE PREPARED IF IT  
OVER FLOWS AGAIN... GREAT EX. IS THE RENO RIVER AREA!!

**#2** What do you think about the recommended project for this tributary?  
¿Qué piensas del proyecto recomendado para este afluente?

THIS WILL BE A GREAT OPPORTUNITY TO RE-EDUCATE TEACH PEOPLE  
ABOUT NATURE/RIVER, OUTDOOR SPACES TO EDUCATE  
BEING THE COMMUNITY TO GATHER  
\* LOOK INTO RENO RIVER!

## Reimagine Your River, Creeks, and Streams



Tell us what you think about the proposed project for each tributary. Please use the spaces provided to share your ideas.

Díganos lo que piensas sobre el proyecto propuesto para cada afluente. Por favor, usa los espacios provistos para compartir tus ideas.

## Aliso Canyon Wash

**#1** What improvements would you like to see included in the recommended project for this tributary?  
¿Cuáles mejoramientos te gustarían ver incluidos en el proyecto recomendado para este afluente?

INCORPORATE MORE EDUCATION FOR LOCALS + STUDENTS AROUND  
CREATE MOMENTS OF GATHERING  
HAVE OPP FOR SMALL BUSINESS AROUND PATH. SMALL  
STRUCTURES TO TEACH FROM, SELL LOCALLY FROM.

**#2** What do you think about the recommended project for this tributary?  
¿Qué piensas del proyecto recomendado para este afluente?

I FEEL ITS THE MOST CENTRALIZED WHICH CAN  
BE REALLY BENEFICIAL TO THE COMMUNITY.

## Burbank-Western Channel

**#1** What improvements would you like to see included in the recommended project for this tributary?  
¿Cuáles mejoramientos te gustarían ver incluidos en el proyecto recomendado para este afluente?

CENTER AREA OF DESIGN. [B] NEEDS TO INCLUDE PLANTS THAT WILL  
ALSO BE POLLUTION TO BE CAPTURED... (HEAT ISLAND PLANTING)...  
BORDER PLANTING. THIS AREA IN B WILL NEED LEGS/SHADE  
AREAS FOR STUDENTS TO LEARN ABOUT LANDSCAPING, ETC.

**#2** What do you think about the recommended project for this tributary?  
¿Qué piensas del proyecto recomendado para este afluente?

I LIKE THE A + B STATION MOST BECAUSE ITS BRING  
MORE OPPORTUNITIES TO HAVE MORE THAN JUST PICK UP  
AT THE S PAVY.

## Verdugo Wash

**#1** What improvements would you like to see included in the recommended project for this tributary?  
¿Cuáles mejoramientos te gustarían ver incluidos en el proyecto recomendado para este afluente?

THIS AREA HAS ALWAYS STAYED LIKE A PASS THROUGH AREA ONLY  
SO TO SEE THAT THE WLS WILL BE GIVEN THE CHANCE TO  
BE USED AS SPACE IS GREAT. MORE ACCESS FOR PEDESTRIANS  
OVER TO THE COMMUNITY COLLEGES.

**#2** What do you think about the recommended project for this tributary?  
¿Qué piensas del proyecto recomendado para este afluente?

WHERE WOULD PARKING GO? HOW WOULD THE NEIGHBORHOOD  
FEEL ABOUT THIS?



### Arroyo Seco

**#1** What improvements would you like to see included in the recommended project for this tributary?  
¿Cuáles mejoramientos te gustaría ver incluidos en el proyecto recomendado para este afluente?

There's little connections to the LA River and the Los Angeles State park. I would recommend to connect the river to the park here the underpass area.

**#2** What do you think about the recommended project for this tributary?  
¿Qué piensas del proyecto recomendado para este afluente?

I think it's a great idea. It was thought through in order to <sup>conserve</sup> ~~connect~~ the community.

#### Questions...

#### Preguntas...

What is going to happen with the reservoir near Elysian park?

### Thank You! ¡Gracias!

Your input tonight will shape the Upper Los Angeles River and Tributaries Revitalization Plan.

Tu opinión esta noche dará forma al Plan de Revitalización de La Sección Arriba del Río Los Angeles y sus afluentes

### Pacoima Wash

**#1** What improvements would you like to see included in the recommended project for this tributary?  
¿Cuáles mejoramientos te gustaría ver incluidos en el proyecto recomendado para este afluente?

---

---

---

**#2** What do you think about the recommended project for this tributary?  
¿Qué piensas del proyecto recomendado para este afluente?

---

---

---

### Tujunga Wash

**#1** What improvements would you like to see included in the recommended project for this tributary?  
¿Cuáles mejoramientos te gustaría ver incluidos en el proyecto recomendado para este afluente?

---

---

---

**#2** What do you think about the recommended project for this tributary?  
¿Qué piensas del proyecto recomendado para este afluente?

---

---

---

## Reimagine Your River, Creeks, and Streams



Tell us what you think about the proposed project for each tributary. Please use the spaces provided to share your ideas.

Díganos lo que piensas sobre el proyecto propuesto para cada afluente. Por favor, usa los espacios provistos para compartir tus ideas.

### Aliso Canyon Wash

**#1** What improvements would you like to see included in the recommended project for this tributary?  
¿Cuáles mejoramientos te gustaría ver incluidos en el proyecto recomendado para este afluente?

---

---

---

**#2** What do you think about the recommended project for this tributary?  
¿Qué piensas del proyecto recomendado para este afluente?

---

---

---

### Burbank-Western Channel

**#1** What improvements would you like to see included in the recommended project for this tributary?  
¿Cuáles mejoramientos te gustaría ver incluidos en el proyecto recomendado para este afluente?

---

---

---

**#2** What do you think about the recommended project for this tributary?  
¿Qué piensas del proyecto recomendado para este afluente?

---

---

---

### Verdugo Wash

**#1** What improvements would you like to see included in the recommended project for this tributary?  
¿Cuáles mejoramientos te gustaría ver incluidos en el proyecto recomendado para este afluente?

---

---

---

**#2** What do you think about the recommended project for this tributary?  
¿Qué piensas del proyecto recomendado para este afluente?

---

---

---

### Arroyo Seco

**#1** What improvements would you like to see included in the recommended project for this tributary?  
*¿Cuáles mejoramientos te gustarían ver incluidos en el proyecto recomendado para este afluente?*

---

---

---

**#2** What do you think about the recommended project for this tributary?  
*¿Qué piensas del proyecto recomendado para este afluente?*

---

---

---

Questions...  
Preguntas...

---

---

---

---

### Thank You! ¡Gracias!

Your input tonight will shape the Upper Los Angeles River and Tributaries Revitalization Plan.  
*Tu opinión esta noche dará forma al Plan de Revitalización de La Sección Arriba del Río Los Angeles y sus afluentes*

### Pacoima Wash

**#1** What improvements would you like to see included in the recommended project for this tributary?  
*¿Cuáles mejoramientos te gustarían ver incluidos en el proyecto recomendado para este afluente?*

---

---

---

**#2** What do you think about the recommended project for this tributary?  
*¿Qué piensas del proyecto recomendado para este afluente?*

---

---

---

### Tujunga Wash

**#1** What improvements would you like to see included in the recommended project for this tributary?  
*¿Cuáles mejoramientos te gustarían ver incluidos en el proyecto recomendado para este afluente?*

---

---

---

**#2** What do you think about the recommended project for this tributary?  
*¿Qué piensas del proyecto recomendado para este afluente?*

---

---

---

## Reimagine Your River, Creeks, and Streams



Tell us what you think about the proposed project for each tributary. Please use the spaces provided to share your ideas.

*Díganos lo que piensas sobre el proyecto propuesto para cada afluente. Por favor, usa los espacios provistos para compartir tus ideas.*

### Aliso Canyon Wash

**#1** What improvements would you like to see included in the recommended project for this tributary?  
*¿Cuáles mejoramientos te gustarían ver incluidos en el proyecto recomendado para este afluente?*

*Green lung is good because there are few parks & tree canopy. Will help with pollution & heat island effect.*

**#2** What do you think about the recommended project for this tributary?  
*¿Qué piensas del proyecto recomendado para este afluente?*

---

---

---

### Burbank-Western Channel

**#1** What improvements would you like to see included in the recommended project for this tributary?  
*¿Cuáles mejoramientos te gustarían ver incluidos en el proyecto recomendado para este afluente?*

---

---

---

**#2** What do you think about the recommended project for this tributary?  
*¿Qué piensas del proyecto recomendado para este afluente?*

---

---

---

### Verdugo Wash

**#1** What improvements would you like to see included in the recommended project for this tributary?  
*¿Cuáles mejoramientos te gustarían ver incluidos en el proyecto recomendado para este afluente?*

---

---

---

**#2** What do you think about the recommended project for this tributary?  
*¿Qué piensas del proyecto recomendado para este afluente?*

---

---

---



**Arroyo Seco**

**#1** What improvements would you like to see included in the recommended project for this tributary?  
¿Cuáles mejoramientos te gustaría ver incluidos en el proyecto recomendado para este afluente?

bike path  
Daylight creek  
Active recreation

**#2** What do you think about the recommended project for this tributary?  
¿Qué piensas del proyecto recomendado para este afluente?

Open space for active recreation  
Daylight creek

Questions... Preguntas... Remove concrete  
there should be bike paths  
along all tributaries so people can  
bike to the LA River away from vehicle  
traffic from a bunch of parts of  
the cities  
all walk + travel paths should be smooth  
to accommodate wheelchairs strollers etc  
without bumps

**Thank You!**  
**¡Gracias!** Get rid of concrete  
ADA accessible  
Your input tonight will shape the Upper Los Angeles River and Tributaries  
Revitalization Plan.  
Tu opinión esta noche dará forma al Plan de Revitalización de La Sección Arriba del  
Río Los Angeles y sus afluentes

**Pacoima Wash**

**#1** What improvements would you like to see included in the recommended project for this tributary?  
¿Cuáles mejoramientos te gustaría ver incluidos en el proyecto recomendado para este afluente?

\_\_\_\_\_

**#2** What do you think about the recommended project for this tributary?  
¿Qué piensas del proyecto recomendado para este afluente?

\_\_\_\_\_

**Tujunga Wash**

**#1** What improvements would you like to see included in the recommended project for this tributary?  
¿Cuáles mejoramientos te gustaría ver incluidos en el proyecto recomendado para este afluente?

\_\_\_\_\_

**#2** What do you think about the recommended project for this tributary?  
¿Qué piensas del proyecto recomendado para este afluente?

\_\_\_\_\_

**Reimagine Your River,  
Creeks, and Streams**



Tell us what you think about the proposed project for each tributary. Please use the spaces provided to share your ideas.

Díganos lo que piensas sobre el proyecto propuesto para cada afluente. Por favor, usa los espacios provistos para compartir tus ideas.

**Aliso Canyon Wash**

**#1** What improvements would you like to see included in the recommended project for this tributary?  
¿Cuáles mejoramientos te gustaría ver incluidos en el proyecto recomendado para este afluente?

\_\_\_\_\_

**#2** What do you think about the recommended project for this tributary?  
¿Qué piensas del proyecto recomendado para este afluente?

\_\_\_\_\_

**Burbank-Western Channel**

**#1** What improvements would you like to see included in the recommended project for this tributary?  
¿Cuáles mejoramientos te gustaría ver incluidos en el proyecto recomendado para este afluente?

bike path along channel with barrier (eg trees)  
between it and freeway

**#2** What do you think about the recommended project for this tributary?  
¿Qué piensas del proyecto recomendado para este afluente?

\_\_\_\_\_

**Verdugo Wash**

**#1** What improvements would you like to see included in the recommended project for this tributary?  
¿Cuáles mejoramientos te gustaría ver incluidos en el proyecto recomendado para este afluente?

\_\_\_\_\_

**#2** What do you think about the recommended project for this tributary?  
¿Qué piensas del proyecto recomendado para este afluente?

\_\_\_\_\_

## Arroyo Seco

**#1** What improvements would you like to see included in the recommended project for this tributary?  
¿Cuáles mejoramientos te gustaría ver incluidos en el proyecto recomendado para este afluente?

filtered <sup>native</sup> ground water No concrete; replenished wild life (fish)  
local School education (taught by local natives)  
on how to care for land & water

**#2** What do you think about the recommended project for this tributary?  
¿Qué piensas del proyecto recomendado para este afluente?

Permeable bike path. No more concrete  
local Native Space (Ceremonial & places to gather)  
No invasive species.

Questions...  
Preguntas...

## Thank You! ¡Gracias!

Your input tonight will shape the Upper Los Angeles River and Tributaries Revitalization Plan.  
Tu opinión esta noche dará forma al Plan de Revitalización de La Sección Arriba del Río Los Angeles y sus afluentes

## Pacoima Wash

**#1** What improvements would you like to see included in the recommended project for this tributary?  
¿Cuáles mejoramientos te gustaría ver incluidos en el proyecto recomendado para este afluente?

Not Cause gentrification. No concrete. Natural  
Bring back the native plants & fish  
Decontamination of land & water

**#2** What do you think about the recommended project for this tributary?  
¿Qué piensas del proyecto recomendado para este afluente?

Designated space for local tribal people  
Areas for local tribal people to gather their relatives (resources)

## Tujunga Wash

**#1** What improvements would you like to see included in the recommended project for this tributary?  
¿Cuáles mejoramientos te gustaría ver incluidos en el proyecto recomendado para este afluente?

Education on how to care for land & water by local tribes  
Decontamination of water  
Removal of concrete replenish native water life (fish)

**#2** What do you think about the recommended project for this tributary?  
¿Qué piensas del proyecto recomendado para este afluente?

Native Space for Native people  
Removal of invasive species.

## Reimagine Your River, Creeks, and Streams



Tell us what you think about the proposed project for each tributary. Please use the spaces provided to share your ideas.

Díganos lo que piensas sobre el proyecto propuesto para cada afluente. Por favor, usa los espacios provistos para compartir tus ideas.

## Aliso Canyon Wash

**#1** What improvements would you like to see included in the recommended project for this tributary?  
¿Cuáles mejoramientos te gustaría ver incluidos en el proyecto recomendado para este afluente?

NO concrete, filtered ground water  
Removal Decontamination (of land & water)  
Education to local schools on how to care for the water & land (indigenous taught)

**#2** What do you think about the recommended project for this tributary?  
¿Qué piensas del proyecto recomendado para este afluente?

Designated tribal space A place to allow local tribal people to gather their relatives (resource)  
Permeable walking Paths  
No invasive species Replenish native water life (fish)

## Burbank-Western Channel

**#1** What improvements would you like to see included in the recommended project for this tributary?  
¿Cuáles mejoramientos te gustaría ver incluidos en el proyecto recomendado para este afluente?

Removal of concrete, natural, Native Plants (only)  
Removal of invasive species  
School education by local natives on how to care for land & water

**#2** What do you think about the recommended project for this tributary?  
¿Qué piensas del proyecto recomendado para este afluente?

Space for local natives (ceremonial) place to gather  
Decontamination of land & water

## Verdugo Wash

**#1** What improvements would you like to see included in the recommended project for this tributary?  
¿Cuáles mejoramientos te gustaría ver incluidos en el proyecto recomendado para este afluente?

Removal of concrete, natural, Native plants <sup>only</sup>  
Removal of invasive species  
Education by local natives on how to care for land & water

**#2** What do you think about the recommended project for this tributary?  
¿Qué piensas del proyecto recomendado para este afluente?

Space for local native (ceremonial) place to gather  
Decontamination of land & water



**Arroyo Seco**

**#1** What improvements would you like to see included in the recommended project for this tributary?  
¿Cuáles mejoramientos te gustarían ver incluidos en el proyecto recomendado para este afluente?

---

---

---

**#2** What do you think about the recommended project for this tributary?  
¿Qué piensas del proyecto recomendado para este afluente?

---

---

---

Questions...  
Preguntas...

---

---

---

---

**Thank You!**  
**¡Gracias!**

Your input tonight will shape the Upper Los Angeles River and Tributaries Revitalization Plan.  
Tu opinión esta noche dará forma al Plan de Revitalización de La Sección Arriba del Río Los Angeles y sus afluentes

**Pacoima Wash**

**#1** What improvements would you like to see included in the recommended project for this tributary?  
¿Cuáles mejoramientos te gustarían ver incluidos en el proyecto recomendado para este afluente?

Please I would like to see spaces available for agricultural use by the community. No gentrification. Protection from flooding. If there is recreational use, have some profits benefit community.

**#2** What do you think about the recommended project for this tributary?  
¿Qué piensas del proyecto recomendado para este afluente?

I think it is great, but would like to see indigenous people's input.

**Tujunga Wash**

**#1** What improvements would you like to see included in the recommended project for this tributary?  
¿Cuáles mejoramientos te gustarían ver incluidos en el proyecto recomendado para este afluente?

Have more spaces available for wildlife crossing.  
Do not have 24 hr. lighting because it will impact the breeding cycles of animals.

**#2** What do you think about the recommended project for this tributary?  
¿Qué piensas del proyecto recomendado para este afluente?

---

---

---

**Reimagine Your River, Creeks, and Streams**



Tell us what you think about the proposed project for each tributary. Please use the spaces provided to share your ideas.

Díganos lo que piensas sobre el proyecto propuesto para cada afluente. Por favor, usa los espacios provistos para compartir tus ideas.

**Aliso Canyon Wash**

**#1** What improvements would you like to see included in the recommended project for this tributary?  
¿Cuáles mejoramientos te gustarían ver incluidos en el proyecto recomendado para este afluente?

---

---

---

**#2** What do you think about the recommended project for this tributary?  
¿Qué piensas del proyecto recomendado para este afluente?

---

---

---

**Burbank-Western Channel**

**#1** What improvements would you like to see included in the recommended project for this tributary?  
¿Cuáles mejoramientos te gustarían ver incluidos en el proyecto recomendado para este afluente?

---

---

---

**#2** What do you think about the recommended project for this tributary?  
¿Qué piensas del proyecto recomendado para este afluente?

---

---

---

**Verdugo Wash**

**#1** What improvements would you like to see included in the recommended project for this tributary?  
¿Cuáles mejoramientos te gustarían ver incluidos en el proyecto recomendado para este afluente?

---

---

---

**#2** What do you think about the recommended project for this tributary?  
¿Qué piensas del proyecto recomendado para este afluente?

---

---

---

## Arroyo Seco

### #1

What improvements would you like to see included in the recommended project for this tributary?  
¿Cuáles mejoramientos te gustaría ver incluidos en el proyecto recomendado para este afluente?

I support renaturalization of the concrete channel. For Design Area C, it would be great to have a green way connecting to transit and cultural institutions.

### #2

What do you think about the recommended project for this tributary?  
¿Qué piensas del proyecto recomendado para este afluente?

It's a shame that the Metro bikeshare was unsuccessful in Pasadena. It would have been great to have. Please add more spaces for cultural events like yoga and bike-in movies. 😊

Questions...

Preguntas...

Will any of these projects be started or finished in my lifetime? What's the overall timeline (in years)?

## Thank You! ¡Gracias!

Your input tonight will shape the Upper Los Angeles River and Tributaries Revitalization Plan.

Tu opinión esta noche dará forma al Plan de Revitalización de La Sección Arriba del Río Los Angeles y sus afluentes

## Pacoima Wash

### #1

What improvements would you like to see included in the recommended project for this tributary?  
¿Cuáles mejoramientos te gustaría ver incluidos en el proyecto recomendado para este afluente?

Take advantage of the existing San Fernando Rd bike path and Sylmar/San Fernando Metrolink Station. Add walkways to/from the transit and the parks/schools. Metro Bus

### #2

What do you think about the recommended project for this tributary?  
¿Qué piensas del proyecto recomendado para este afluente?

Coordinate with any potential Bus-Rapid Transit (BRT) project. Let people access cultural events in the new space (concerts, etc) via transit. (Car-free)

## Tujunga Wash

### #1

What improvements would you like to see included in the recommended project for this tributary?  
¿Cuáles mejoramientos te gustaría ver incluidos en el proyecto recomendado para este afluente?

While it's nice to have nostalgia for the 1950's it is also important to be forward-looking. Q: How will we get from point A to point B safely and without pollution? A: Bicycles!

### #2

What do you think about the recommended project for this tributary?  
¿Qué piensas del proyecto recomendada para este afluente?

Rather than a circular loop to bike around I prefer a linear path that is separate from busy streets. It's not useful for transportation if it's an isolated loop. People will drive to it which does not address congestion & circulation.

## Reimagine Your River, Creeks, and Streams



Tell us what you think about the proposed project for each tributary. Please use the spaces provided to share your ideas.

Díganos lo que piensas sobre el proyecto propuesto para cada afluente. Por favor, usa los espacios provistos para compartir tus ideas.

## Aliso Canyon Wash

### #1

What improvements would you like to see included in the recommended project for this tributary?  
¿Cuáles mejoramientos te gustaría ver incluidos en el proyecto recomendado para este afluente?

It is GREAT to create access to transit (Metrolink) the current streets Wilbur/Parthenia are very dangerous! I didn't even know Vanalden park was there. Wayfinding signs are key!

### #2

What do you think about the recommended project for this tributary?  
¿Qué piensas del proyecto recomendado para este afluente?

Be sure to coordinate with Metrolink because there was talk about relocating that station. Also there was talk about a 'Road Diet' on Parthenia. Please consider where to position entrances/exits to the developed area. The most frustrating thing about the valley is walls/fences that reduce walkability and make it less pedestrian-friendly. After it was identified!

## Burbank-Western Channel

### #1

What improvements would you like to see included in the recommended project for this tributary?  
¿Cuáles mejoramientos te gustaría ver incluidos en el proyecto recomendado para este afluente?

Connect to LA River + Glendale Narrows (both sides of the river) with a bike path along the Burbank Western Channel

### #2

What do you think about the recommended project for this tributary?  
¿Qué piensas del proyecto recomendado para este afluente?

It is VERY IMPORTANT to create a safe bicycle route from Chandler bike path to Griffith Park because the current options are DANGEROUS we ride along victory sometimes.

## Verdugo Wash

### #1

What improvements would you like to see included in the recommended project for this tributary?  
¿Cuáles mejoramientos te gustaría ver incluidos en el proyecto recomendado para este afluente?

It is really sad that only a small area of each tributary will be improved. As a 6-year resident of Glendale, we always hoped the entire length of the wash could be a bike path connecting North and South Glendale.

### #2

What do you think about the recommended project for this tributary?  
¿Qué piensas del proyecto recomendada para este afluente?

This recommended project improves the North area (which is privileged) and does not help the densely populated South Glendale. But I understand the need for native crossing the 2-fwy.